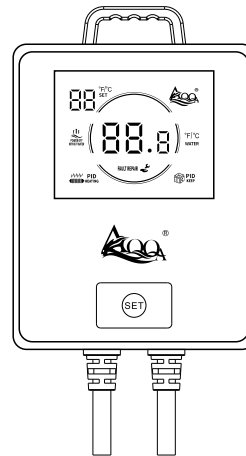
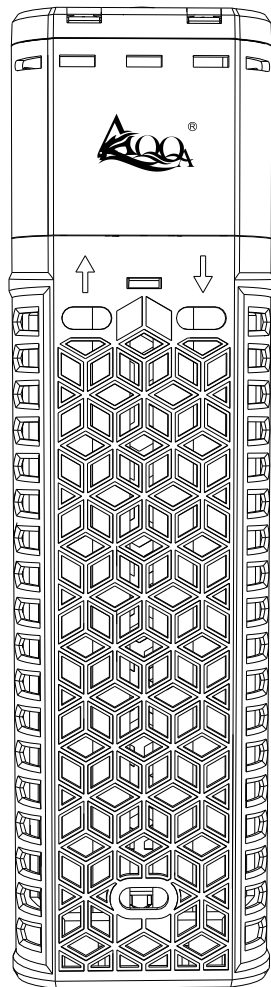




AQ129 USER MANUAL

AQQA Intelligent Quartz Glass Aquarium Heater



The AQQA intelligent glass aquarium heater is a high-quality heating equipment for freshwater and saltwater aquariums. Its effective, fast heating performance ensures that the optimum aquarium temperature is maintained evenly and allows precise temperature control. For intelligent heating with constant temperatures, the intelligent AQQA glass aquarium heater offers reliable performance for all aquarium fans.

1. PRODUCT FEATURES

Fast heating: The explosion-proof quartz glass heating element has a chrome-nickel heating wire that raises the water to temperature quickly and safely.

Reliable and Durable: The quartz glass is leak-proof and quickly releases heat into the water. The heating element holder is made of high-quality PC plastic, is highly temperature-resistant, and can protect your fish from burns.

Precise Temperature Control: The adjustable range of this heater is 59-93°F/15-34°C. You can set the temperature safely and conveniently using the external controller. The heating element is structurally separated from the electronic parts. The temperature control is accurate to ± 1 degree Celsius.

Intelligent Precision Control: The large LED display shows the preset temperature with one decimal place and the current water temperature. The temperature can, therefore, be read even at night at some distance from the aquarium. The ABS plastic housing is impact-resistant, looks good, and comes in attractive colors.

Fahrenheit and Celsius Degrees: To switch between Fahrenheit and Celsius, press and hold the "SET" button for 5 seconds. The temperature range is 59-93°F and 15-34°C.

Automatic switch-off if the heater runs dry: If more than 1 inch(2.5cm) of the heating rod is above the water surface, it stops heating, and the overheating protection is automatically activated. The error message "E0" appears on the display. When the heating element is completely covered by water again, it resumes its work.


Protection against overheating: If the water temperature exceeds 3°F/3°C above the preset temperature, the current water temperature flashes on display as an overtemperature alarm. The flashing stops when the water temperature drops to less than 3°F/3°C of the set temperature, and the high-temperature alarm ends.

Energy-saving: A special microcontroller is built into the controller, which measures the temperature precisely and saves up to 20% energy compared to conventional aquarium heaters.

2. PRODUCT PARAMETERS

Model	AQ129			
Power	500W	800W	1000W	1200W
Volt/Freq	US STANDARD: AC 110V-120V/60Hz EU/UK/AU STANDARD: AC 220-240V/50Hz			
Cord length	3.6ft+5.5ft(1.1m+1.7m)			
Applicable tank size	53-80Gal (200-300L)	80-135Gal (300-500L)	135-172Gal (500-650L)	172-227Gal (650-850L)
Temp accuracy	$\pm 1^{\circ}\text{F}$ / $\pm 1^{\circ}\text{C}$			
Control range	59°F~93°F / 15°C~34 °C			
Heating rod size	11.4in×3*in*1.6in 29cm*7.5cm*4cm			
Temp controller dimension	4.5in×2in×1in 11.5cm×5cm×2.5cm			

3. TROUBLESHOOTING

The processing method of the code appears on the LED screen	Error Code	Explanation	Solutions
	E0	Automatic switch-off when out of water	Fully immerse the heater in water
	The current water temperature number flashes	The current water temperature exceeds the set water temperature by more than 3°F (3°C)	Wait until the water has cooled down so that it is less than 3°F (3°C) warmer than the set temperature
	FAULT REPAIR 	Temperature sensor open circuit	Please contact customer service

4. PACKING LIST

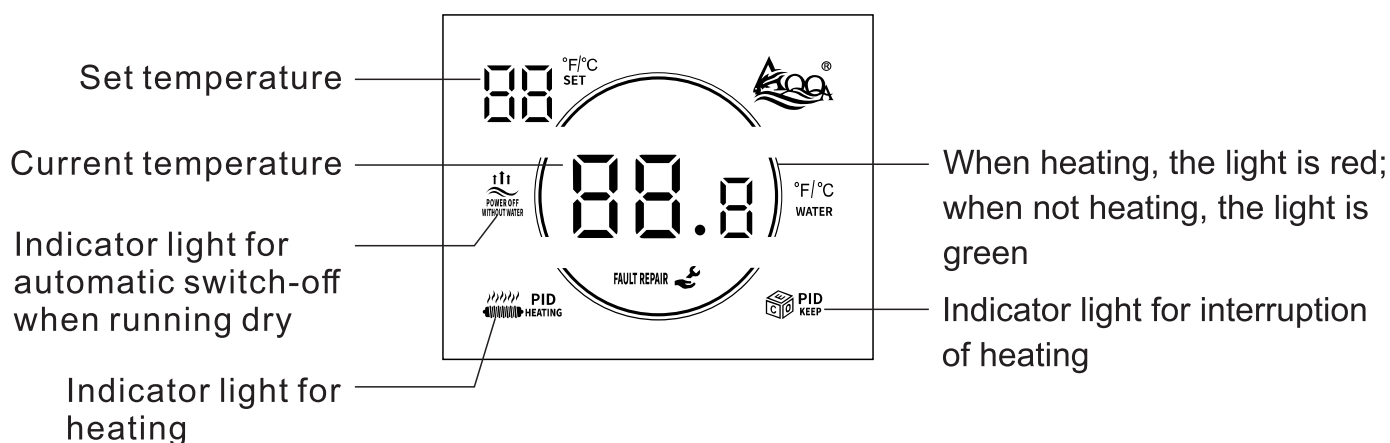
- 1x Explosion-proof quartz heater with controller
- 4x Suction cup
- 2x Sticker
- 1x Adhesive hook
- 1x User manual

5. INSTRUCTION

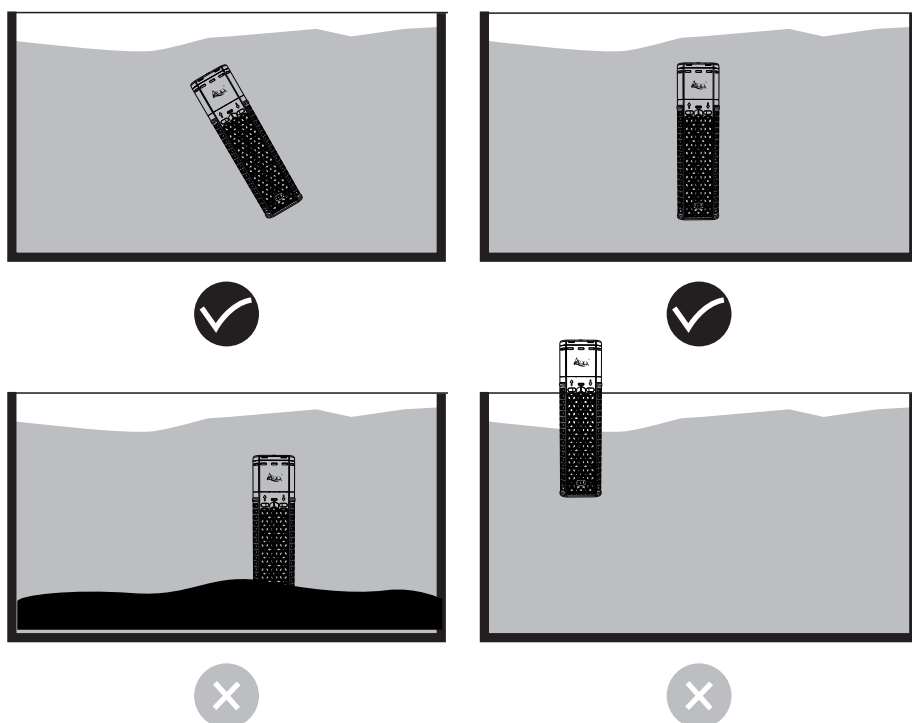
- ① Press the "SET" button to access the temperature setting. Each time you press the button, you increase the temperature by 1°F/1°C. The temperature range of the heater is between 15°C-34°C (59°F-93°F).
- ② Press and hold the "SET" button for 5 seconds to switch between Fahrenheit and Celsius. If the button is not pressed for 3 seconds, the current preset temperature is confirmed, and the appliance exits the temperature setting and returns to the current temperature display.

a. Once the temperature has been set, the heating element heats the water to the desired temperature. Once this is reached, it stops heating. If the water temperature deviates from the preset temperature by 2°F/2°C downwards, the heating element resumes its work until the preset temperature is reached again.

b. If the water temperature is 3°F/3°C above the preset temperature, the current water temperature flashes on the display to indicate an overtemperature alarm. The excess temperature alarm ends automatically if the current temperature is not more than 3°F/3°C above the preset temperature.

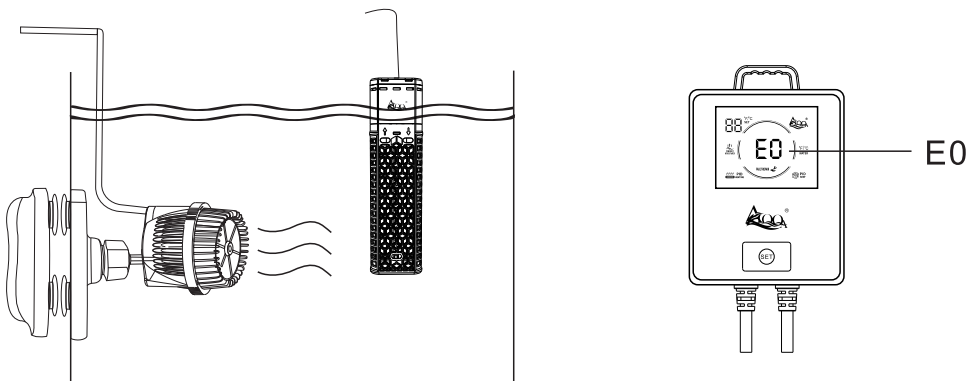


A. Place the heater as shown in the following diagram:



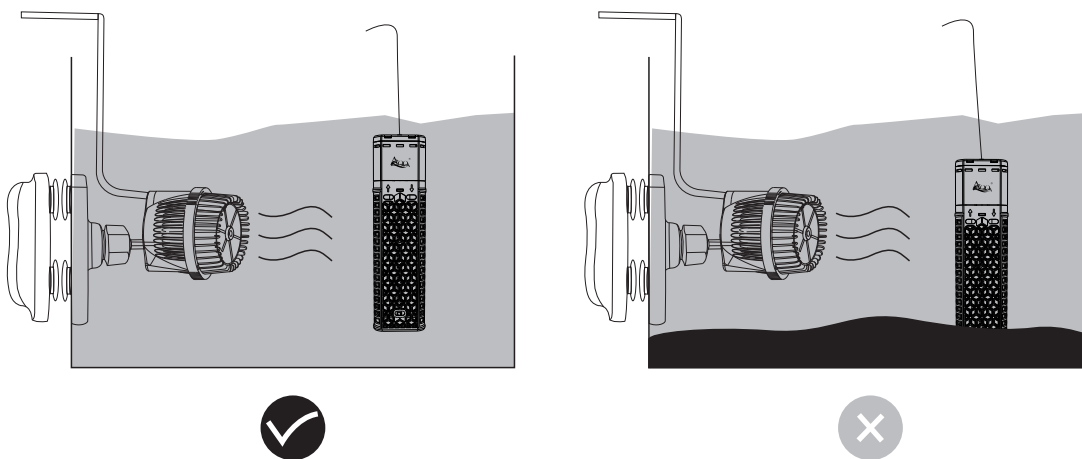
B.Digital display models

1. Automatic warning if the heater runs dry: If at least 1 inch (2.5cm) of the heating element is not covered by water, the digital display shows the error code "E0"; no sound signal is emitted.



! Important Reminders

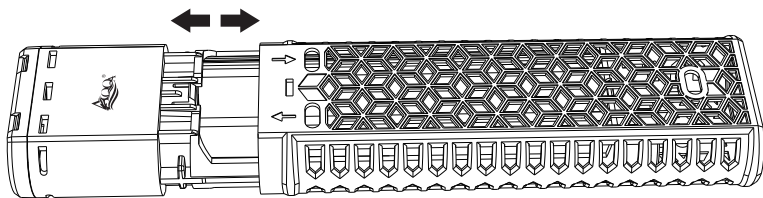
1. Please clean the body of the heater regularly to prevent limescale deposits from settling on the rod body. If limescale builds up on the rod's body over a more extended period, the rod will no longer be able to dissipate the heat properly and will burst when the temperature of the rod rises.
2. The heater must be fully submerged when it is in operation. Unplug the heater and wait 15 minutes before changing the water or removing the heater from the aquarium.
3. Please make sure there is enough water flow and water circulation in the fish tank when using the heater.
4. Please do not bury the heating rod or use it near the sand.



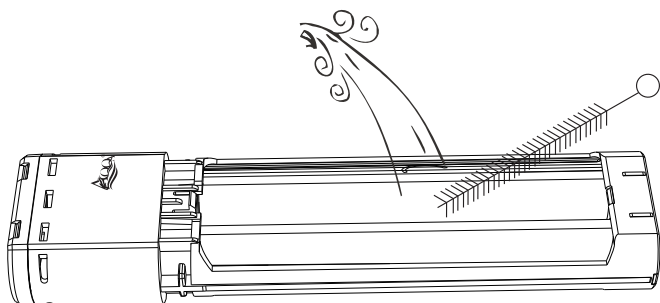
5. Instructions for regular cleaning.

To clean the heater, unplug it first and then leave the heater in the tank for 15 minutes and remove it from the tank. Wash the heater in clean water.

Step 1



Step 2



6. MAINTENANCE

- Unplug or switch off all appliances in the aquarium before carrying out maintenance.
- Do not use detergents or other chemical cleaners.
- To clean the heater, unplug it first and then leave the heater in the tank for 15 minutes and remove it from the tank. Wash the heater in clean water.
- When reinstalling the heater, select your desired location and position the heater below the water.
- This appliance has no parts that can be repaired by users.
- For indoor use only, not in the bathroom.

7. WARNING

To avoid possible electric shock, do not immerse the switch in the water. If the switch falls into the water or becomes wet, do not touch it until you have unplugged it. Basic safety precautions that should be observed are as follows:

1. Read and follow this user manual strictly.

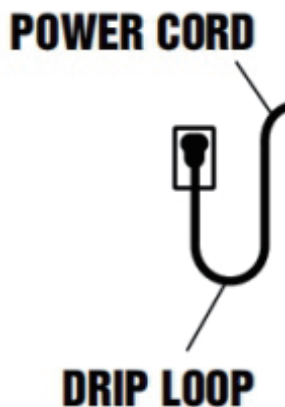
2. DANGER- To avoid possible electric shock, special care should be taken since water is employed in the use of aquarium equipment. For each of the following situations, do not attempt to repair yourself. Instead, return the heater to an authorized service facility for maintenance or discard it.

A. If the heater shows any sign of abnormal working or, unplug the power and remove the heater from the water after 15 minutes.

B. Carefully examine the heater after installation. It should not be plugged in if there is water on parts that are not intended to be wet.

C. Do not operate the heater if it has a damaged cord or plug, is malfunctioning, dropped, or damaged in any manner. The power cord of this heater cannot be replaced. If the cord is damaged, the heater should be discarded.

D. To avoid the possibility of the heater plug getting wet, position the aquarium and its stand to one side of a wall mounted outlet to prevent water from dripping onto the outlet or plug. A “drip loop”, shown in the figure below, should be arranged by the user for each cord, which connects the heater to the outlet. If an extension cord is used, the “drip loop” is the part of the cord below the level of the outlet or the connector that prevents water from traveling along the cord and coming in contact with the outlet. If the plug or outlet does get wet, DO NOT unplug the cord. Disconnect the fuse to the circuit breaker that supplies power to the heater. Then, unplug and examine for the presence of water in the outlet. If you are not sure, consult a certified electrician.



3. Close supervision is necessary when the heater is used near children.
4. This heater is not allowed to be used by persons (including children) with reduced physical sensory or mental capabilities, or lack of experience and knowledge unless they have been given supervision or instruction concerning the use of the heater by a person responsible for their safety.
5. To avoid injury, do not contact moving or hot parts.
6. Always unplug the heater from the outlet when not in use, before putting on or taking off parts, maintenance, or placing hands in the water. Never yank the cord to pull the plug from the outlet. Grasp the plug and pull to disconnect.
7. Do not use the heater for other than intended use. The use of attachments not recommended or sold by the appliance manufacturer may cause an unsafe condition and will void the warranty.
8. Do not install or store the heater where it will be exposed to extreme weather or temperatures below freezing.
9. Only use the heater in freshwater or saltwater, do not use it in other liquids.
10. Make sure the heater is securely installed before operating it.
11. Read and observe all the important notices on the heater.
12. If an extension cord is necessary, a cord with a proper rating should be used, such as rated amperes or watts. A cord rated for fewer amperes or watts than the heater rating may overheat. Care should be taken to arrange the cord so that it will not be tripped over or pulled.
13. The 2-conductor power cord has a polarized plug (one blade is wider than the other.) As a safety feature, this plug will fit in a polarized outlet only one way. If the plug does not fit fully in the outlet, reverse the plug. If it still does not fit, contact a qualified electrician. Never use it with an extension cord unless the plug can be fully inserted. Do not attempt to defeat this safety feature.
14. The heater is intended FOR HOUSEHOLD USE ONLY.
15. SAVE THIS USER MANUAL.

8. AQQA LIMITED MANUFACTURER'S WARRANTY

We offer the end user of this product a manufacturer warranty of 2 years from the date of sale if this product was purchased from an AQQA[®]-authorised specialist dealer

Retain receipt for any future warranty claim. Conditions apply. Products are guaranteed by AQQA[®] Aquatic Supplies to the original purchaser against defective material and workmanship under normal use for a period up to 2 years from the date of the original purchase through an Authorized Dealer. Refer to the User Manual included with your product for specific warranty details.

Products have no warranty if:

1. The product has been serviced, modified or tampered with by anyone other than AQQA[®] Aquatic Supplies.
2. The product has been abused or damaged (including broken or cracked bulbs), and/or.
3. The product has been transported without proper packaging.
4. The product was purchased from an Unauthorized Reseller.

WARRANTY LIABILITY DISCLAIMER

In no event will AQQA® be liable for any consequential or incidental damages, including but not limited to, lost aquatic life, personal injury, property damage, equipment damage, lost profits, lost wages, lost savings, lost income, etc., arising out of the use of any AQQA® products.

1.0. Terms and Conditions of Warranty.

- 1.1. AQQA® warrants to the purchaser, for 2 years from date of original purchase through an Authorized AQQA® Reseller, free to repair or replace parts where fault is found due to defective materials or faulty workmanship and where goods do not operate in accordance with the instructions.
- 1.2. All claims for repair or replacement must be made at place of purchase.
- 1.3. Only the direct purchaser is entitled to warranty claims against us and these are not transferable without our consent.
- 1.4. The original and dated Proof of Purchase (receipt) must be supplied with all goods claims. Please also provide this Guarantee where possible.
- 1.5. Wear parts (e.g.: seals, suction devices, axes, pump wheels, light sources, pH electrodes, filter media, such as filter cartridges, as well as UVC burners), glass damage and the opening of the product, as well as structural changes or the use of non-AQQA® original parts are excluded from the guarantee.
- 1.6. All goods subject to claim under Guarantee should be prepared for transportation in the original packaging or other comparable packaging which offers the same degree of protection and AQQA® must incur no costs from the shipment.
- 1.7. Where claims on inspection reveal goods are in normal working order, AQQA® will request reimbursement of all reasonable costs incurred.
- 1.8. Warranty claims do not exist in the case of only insignificant deviations from the agreed or customary condition or usability, e.g. insignificant deviations in colour, dimensions and/or quality or performance characteristics of the products.
- 1.9. Our warranty obligation extends only to the delivery of newly manufactured products. Unless otherwise agreed, used products are sold as seen, excluding any warranty.

9. DISPOSAL

Do not dispose of this product as unsorted municipal waste. Collection of such waste separately for special treatment is necessary. This product has to be disposed of at an authorized place for the recycling of electrical and electronic appliances rather than being disposed of together with the domestic waste. Collecting and recycling waste is a way of saving natural resources. So, please consult with your local seller to make sure the product is disposed of in an environmentally friendly way.



10. CONTACT INFORMATION

Company Name: Shenzhen Aiku Pet Technology Co., Ltd
Add: Room 501, No.20, Lane 1, Lishipai, Dafapu Community
Bantian Street, Longgang District, Shenzhen Guangdong. 518000
Email: service@aqqapet.com
Website: <http://www.aqqapet.com>



Company Name:EUREP GmbH
Address:Unterlettenweg 1a 85051
Ingolstadt Germany
E-mail:eurep@eurep-gmbh.com
Tel:+49 841 8869 7744



Company Name:ACUMEN
INTERNATIONAL BUSINESS
CONSULTANCY LTD
Address:102 Ock Street,
Abingdon, OX14 5DH
E-mail:info@ukacumen.com
Tel:+44 7410130548



MADE IN CHINA