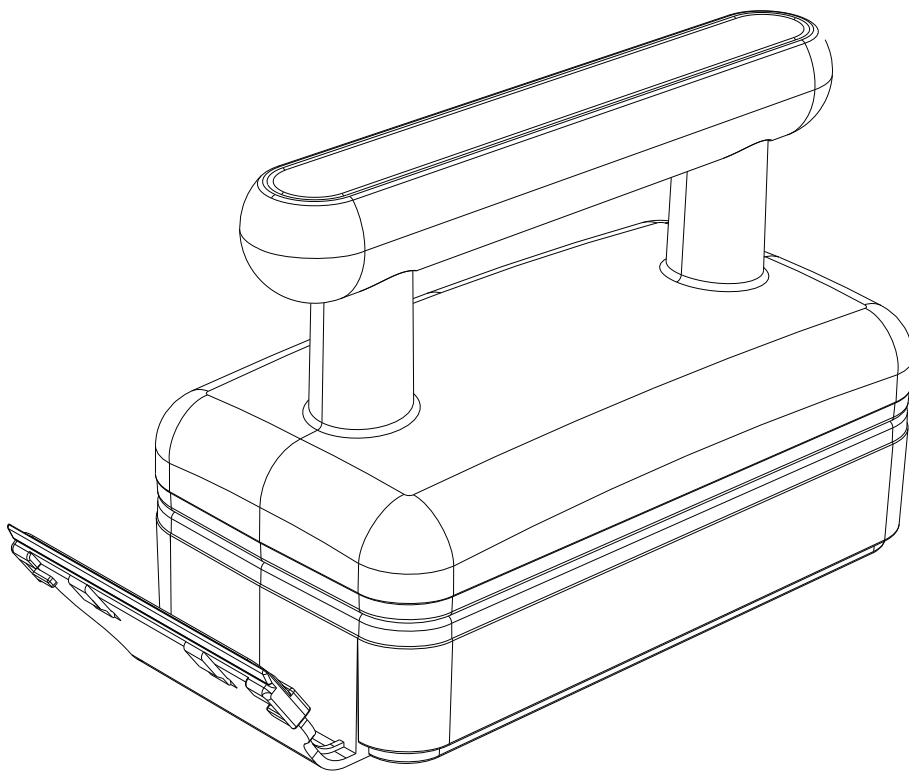




AQ086 USER MANUAL

AQQA Magnetic Aquarium Glass Cleaner



AQQA Magnetic Aquarium Glass Cleaner can be used as a scrubber and scraper to clean the glass in freshwater and saltwater aquariums. Please read this user manual carefully before use and follow strictly in accordance with it.

WARNING: Do not use stainless steel blades in acrylic aquariums.

1. PRODUCT FEATURES

Super Strong Magnetic Power: The AQQA Magnetic Aquarium Glass Cleaner contains a high-quality rare earth magnet with particularly high holding power, which holds the glass cleaner securely and firmly to the aquarium glass.

Multi-function Special Blades: The glass cleaner can be used as a scrubber or scraper. The black surface with stiff bristles protects against scratches and is suitable for removing algae and stubborn dirt from the aquarium glass. The blades are made of stainless steel or plastic and can even handle crusty algae and other particularly stubborn dirt.

Unique Design: The strong magnet and ergonomic design of the handle allow easy and comfortable cleaning with the glass cleaner.

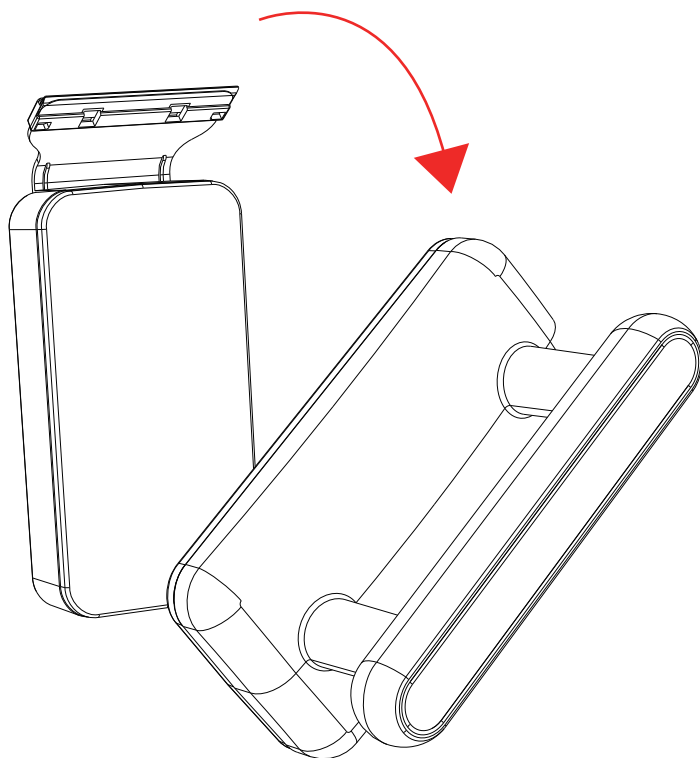
Float-up Design: When the soft side is removed from the aquarium glass, the part of the glass cleaner that is in the aquarium floats to the water surface. This allows you to remove it without getting your hands wet or disturbing fish or aquatic plants.

2. PRODUCT PARAMETERS

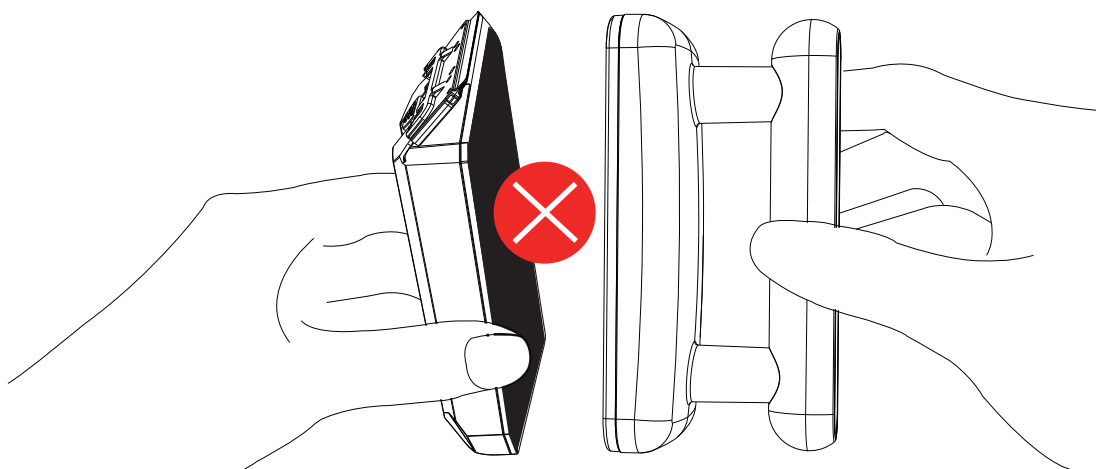
Model No:	AQ086		
Size	M	L	XL
Thickness Glass	0.4~1.0cm 0.2~0.4in	0.5~1.5cm 0.2~0.6in	1.0~2.5cm 0.4~1.0in
Product Size	10*6*7cm 4*2*2.8in	13*6*8cm 5*2.4*3in	14*6*9cm 5.5*2.4*3.5in

3. METHOD OF APPLICATION

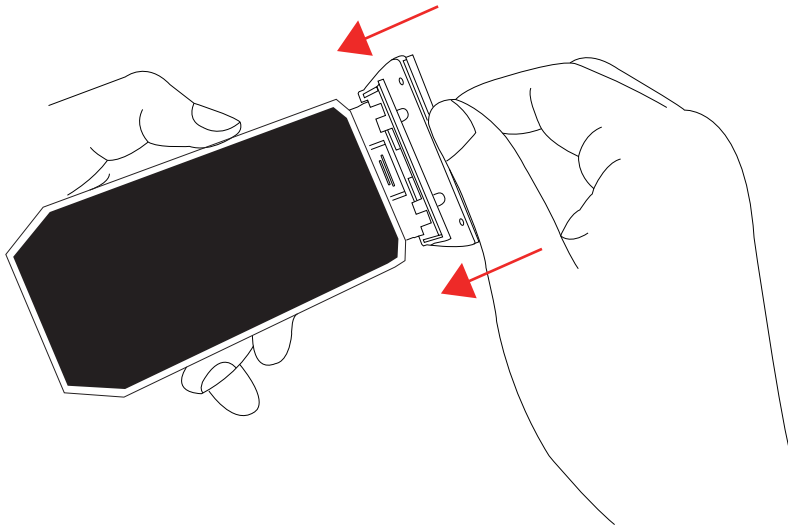
● Take the cleaner out of the package and turn the upper part 90° to separate the two parts. Then hold the part with the stiff bristles against the aquarium glass from the inside and place the part with the soft surface against it from the outside.



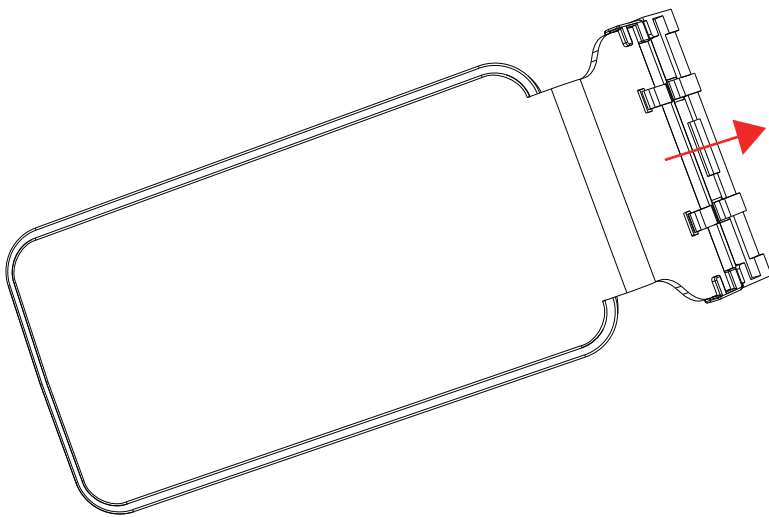
Important reminder: When you put both parts together outside the aquarium, always put a piece of thin cardboard between them. Because of the extremely strong magnetic force, this makes it easy to separate the two parts again later.



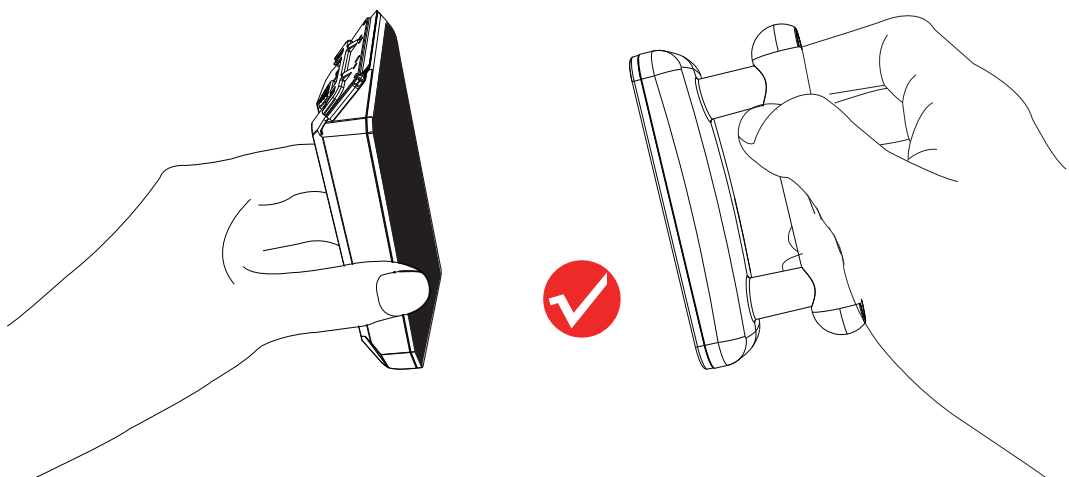
● **Follow the instructions below to assemble the blade:**
Before use, insert the blade into the designated slot on the glass cleaner.

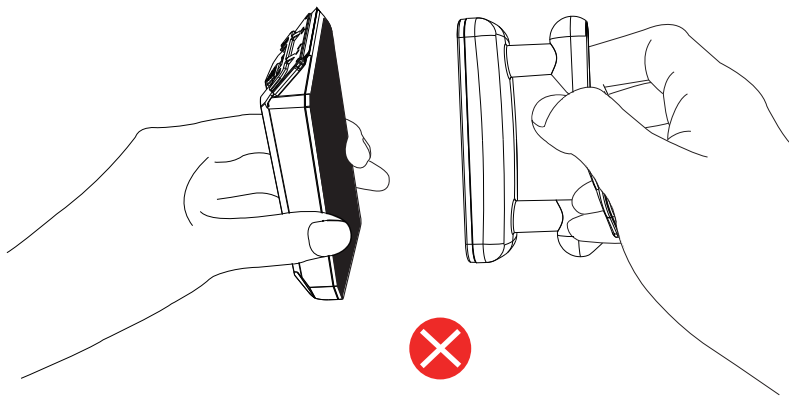
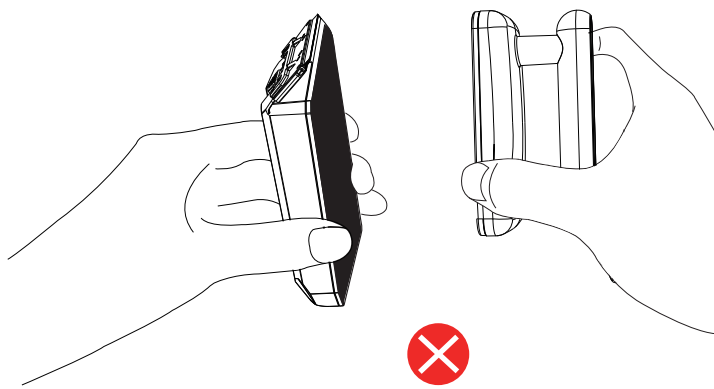


Remove the blade from the cleaner after use.

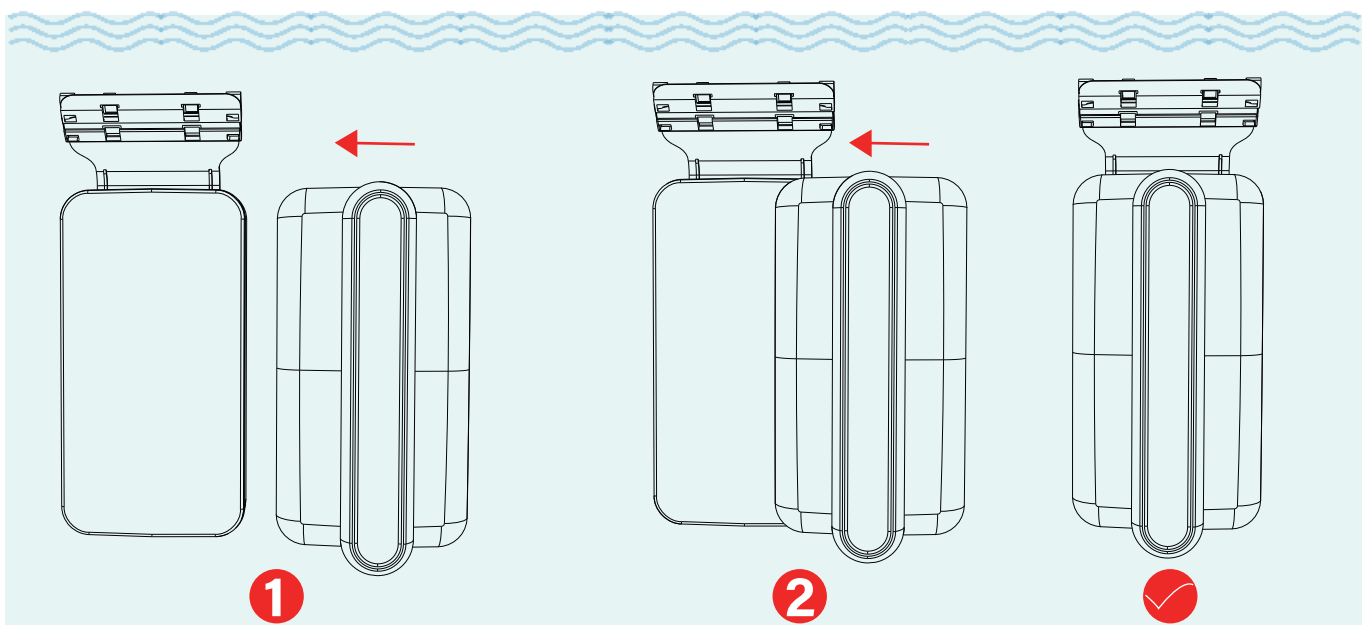


● Be careful not to pinch your fingers between the two parts of the glass cleaner. Only ever hold the cleaner at the side and keep your fingers away from the two surfaces facing the glass.





● To attach the cleaner to the aquarium glass, first hold the part with the stiff cleaning bristles against the inside of the glass and the part with the soft surface against it, offset a little. (Hold both parts firmly so that the glass is not accidentally damaged). Then carefully push both parts together slowly until the magnet grips. Then you can start with the cleaning work.



- When not in use, store the glass cleaner in its packaging.
- Please be careful not to knock/drop the device from a high place.
- For optimal cleaning results, clean the surfaces after each use.
- The two blades can be easily and conveniently replaced.

4. ATTENTIONS

- Please read this user manual carefully before use and follow strictly in accordance with the manual.
- Use caution when attaching and removing the sharp blades and store them in a safe place.
- Use caution when using this powerful magnetic glass cleaner and be careful not to pinch your fingers between the two parts.
- Please keep the magnetic glass cleaner away from children.
- The magnetic glass cleaner is not suitable if you wear a pacemaker or have a defibrillator implanted.
- If you forgot to insert the cardboard insert between the parts for storage, use a screwdriver or similar to separate them.
- To avoid reducing the magnetic force, do not expose the magnetic glass cleaner to high temperatures.
- Please keep away from all magnetic objects such as scissors, etc.

5. PACKAGE INCLUDED

1x Cleaning side with stiff bristles
1x Soft cleaning side
1x Stainless steel blade
1x Plastic blade
1x User manual

6. WARRANTY

This product **MUST** be purchased from an authorized AQQA reseller. Visit our website for a list of authorized resellers. AQQA warrants this product against defects in materials and workmanship for ONE (1) YEAR from the date of the original retail purchase and is non-transferable. Warranty on all products, including aquariums. But it is limited to the replacement of the products and does not cover fish loss, personal injury, property loss or direct, incidental or consequential damage caused by using this product.

Note: AQQA One-year Limited Warranty does not cover damage caused by the followings: improper installation, saltwater corrosion, electrical surges or modifications. Additionally, products that have been refunded are also not covered under the warranty.

If you discover a defect, please contact AQQA, who will, at its option, repair or replace the product at no charge, provided that you return it during the warranty period. A copy of the bill of sale is required as proof of the original purchase date in the event of the product needing repairs within the warranty period. AQQA does not warrant any products that are not AQQA's.

This warranty does not apply if the product has been damaged by accident, abuse, misuse or misapplication, or modified without the written permission of AQQA.

7. CONTACT INFORMATION

Company Name: Shenzhen Aiku Pet Technology Co., Ltd
Add: Room 501, No.20, Lane 1, Lishipai, Dafapu Community
Bantian Street, Longgang District, Shenzhen Guangdong. 518000
Email: service@aqqapet.com
Website: <http://www.aqqapet.com>



Company Name:Acumen IBC Ltd
Address:Ground Floor,94 Ock Street,
Abingdon, OX14 5DH"
E-mail:info@ukacumen.com
Tel:+44 7706338663



Company Name:EUREP GmbH
Address:Unterlettenweg 1a 85051
Ingolstadt Germany
E-mail:eurep@eurep-gmbh.com
Tel:+49 841 8869 7744



MADE IN CHINA