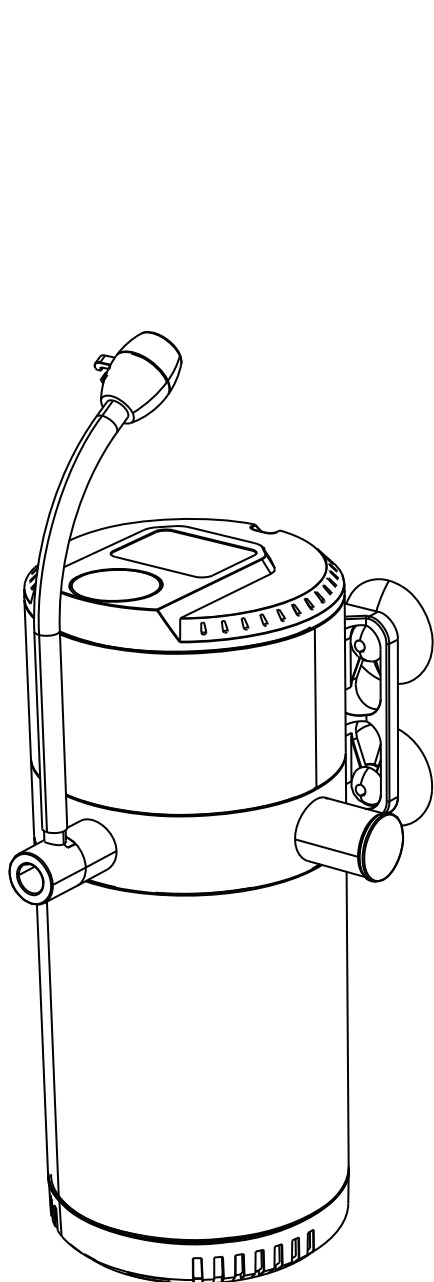


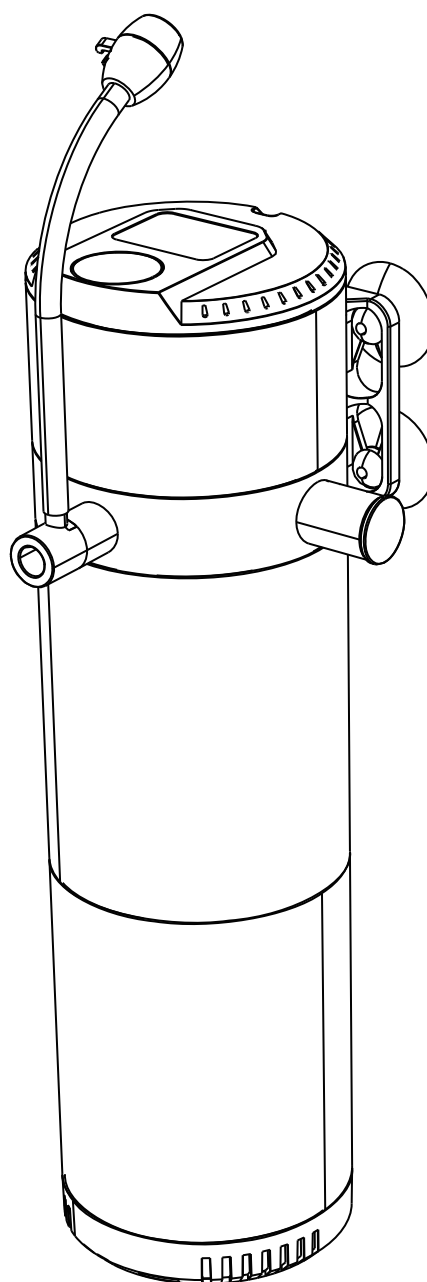


AQ081 USER MANUAL

AQQA 4 in1 aquarium internal filter

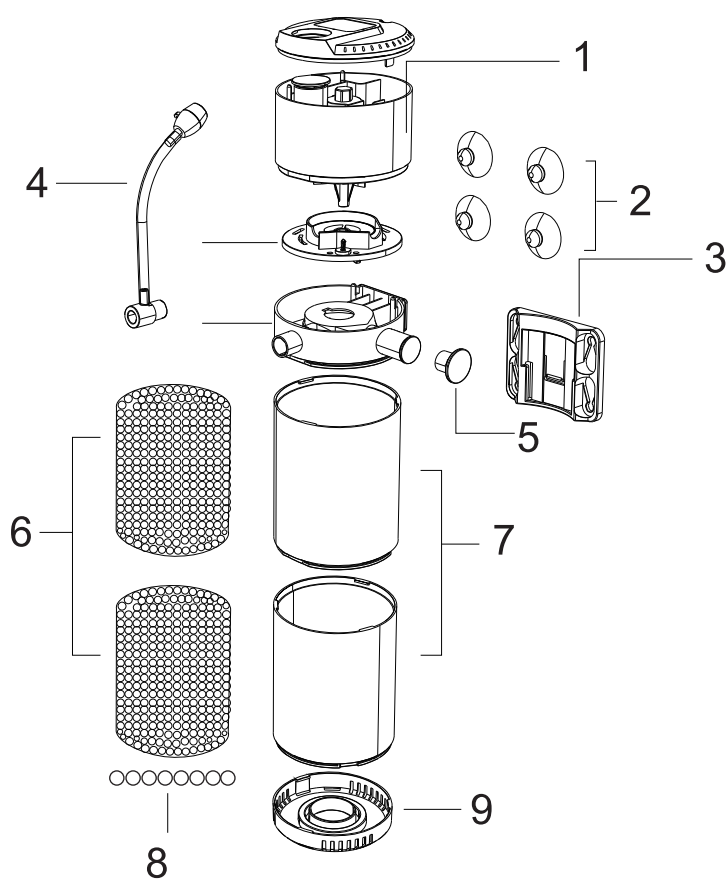


8W



12W

1. PRODUCT DIAGRAM



- 1. Host
- 2. Rubber suction cup
- 3. Base
- 4. Air hose
- 5. Water outlet plug
- 6. Filter sponge
- 7. Filter cartridge
- 8. Ceramic balls
- 9. Bottom cover

2. PRODUCT FEATURES

1. This 4 in 1 filter is easy to operate and is suitable for water pumping, circulating filtration, aeration and water supply in aquariums. The filter sponge cleans the water and improves the water quality in the aquarium.

The ceramic balls provide a large area for filter bacteria to colonize. They utilize organic pollutants and make a decisive contribution to a stable biotype in the aquarium.

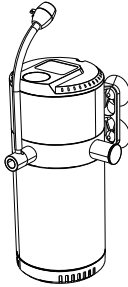
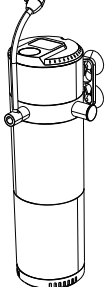
The water outlet ensures an even water flow.

The air inlet increases the oxygen content of the water.

2. **Classic design:** Thanks to its special design, this internal filter saves space and can even be used when the water level is low. Particularly user-friendly to assemble and maintain.

3. **Adjustable air output:** You can flexibly adjust the air output as required.
4. **Multifunctional filter:** Internal and external ceramic shaft, copper wire motor, low-noise design, IP68 waterproof rating. The double-outlet ensures efficient ventilation and ensures enough water flow.

3. PRODUCT SPECIFICATION

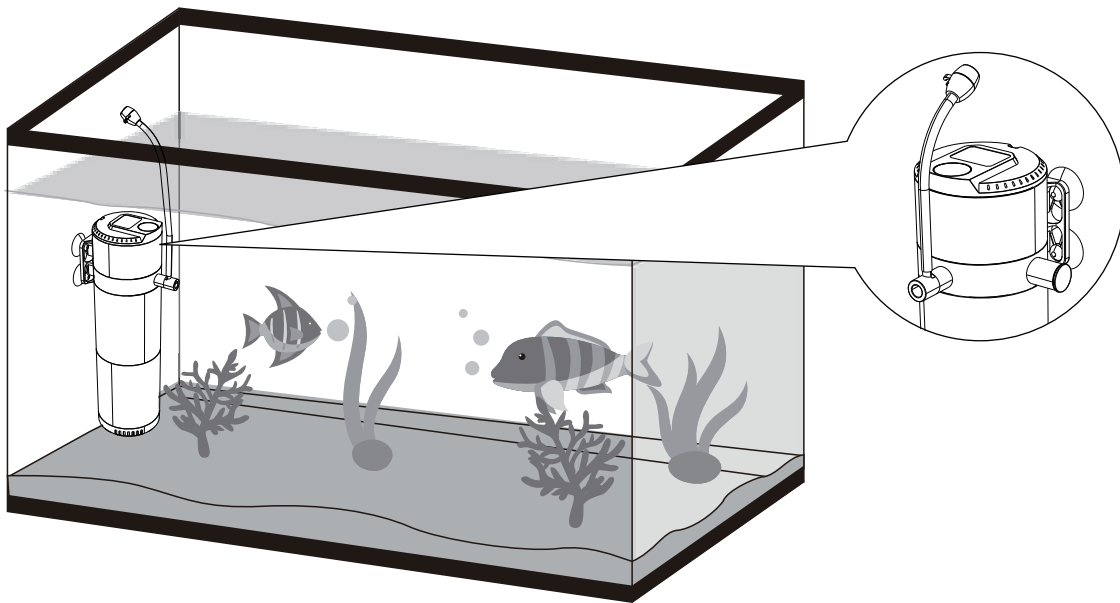
Picture		
Product size	2.5"x2.5"x5.8" (6.4x6.4x14.8CM)	2.5"x2.5"x8.6" (6.4x6.4x21.9CM)
Voltage/Frequency	US standard: AC110-120V/60Hz EU/UK/AU standard: AC220-240V/50Hz	
Model	AQ081-8W	AQ081-12W
Power	8W	12W
Flow	200GPH (750L/H)	260GPH(980L/H)
Recommended aquarium size	40-120Gal(150-450L)	80-200Gal(300-750L)

4. METHOD OF APPLICATION

The filter can be used in different ways.

Option 1

1. Connect the multi-directional outlet to the filter’s water outlet.
2. Secure the filter to the aquarium glass using the suction cups.
3. Make sure the filter is fully submerged in water.
4. Then connect the filter to the power supply.

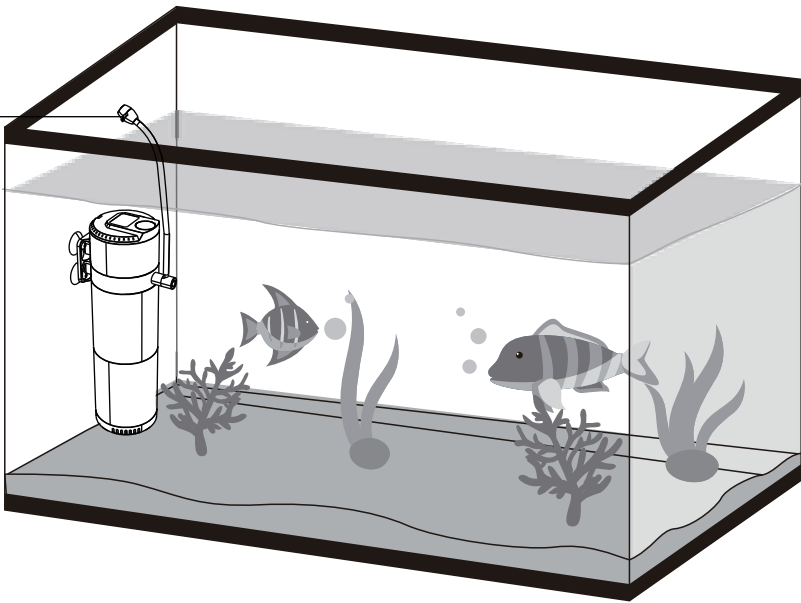


Option 2

With this option, air will be delivered to the outlet, creating bubbles that will help to oxygenate the water for fish in the aquarium.

- 1. Place the filter in the aquarium as described under Option 1.
- 2. Make sure the air inlet regulator is not submerged in the water.
- 3. Connect the filter to the power supply.
- 4. Adjust the airflow by turning the air inlet regulator.

Air inlet regulator with air tube is for use with adjustable water outlet only. Turn the knob left or right to adjust the air flow rate



A. Filter media replacement method

Note: It is recommended to clean the filter sponge every two weeks to a month, depending on the number of fish, and how dirty or degraded the aquarium is.

It is not recommended to clean the ceramic balls. Please replace them when they deteriorate.

To replace the filter sponge, please follow the instructions below:

- A. Hold the filter cages with both hands and turn the cages.
- B. Replace the filter sponge and reassemble the filter.

Reminder: If the water flow decreases significantly, the filter sponge must be replaced so that the aquarium water can continue to be filtered effectively.

- 1. Hold the filter with both hands
- 2. Turn the filter cages
- 3. Take out the filter sponge

Replace the ceramic balls

Remove the filter cages from the filter. Remove the worn ceramic balls and insert new ones.

Note: Turn the filter cages carefully to remove them. Do not pull to the sides.

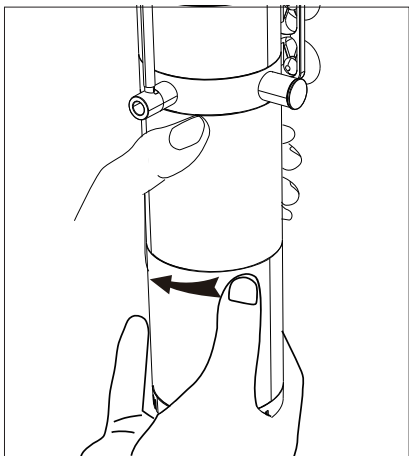


fig 1

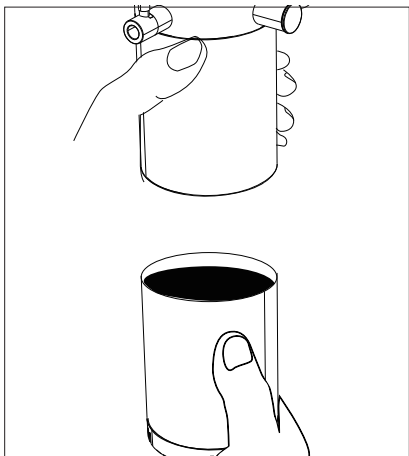


fig 2

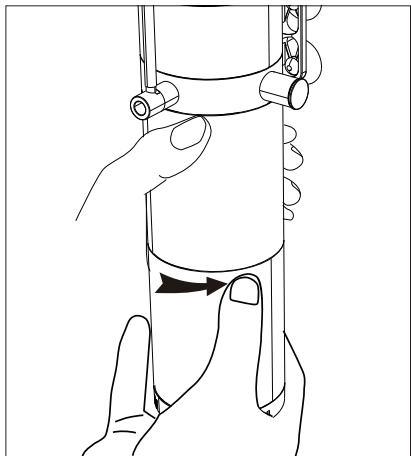


fig 3

Maintenance of the filter

Pull out the filter cage, remove the impeller cover for cleaning. Then reassemble the filter.

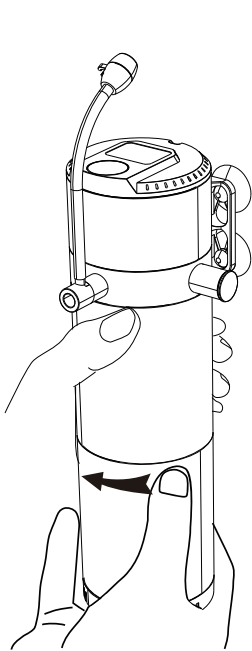


fig 4

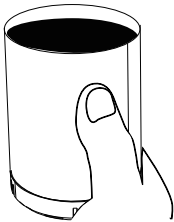
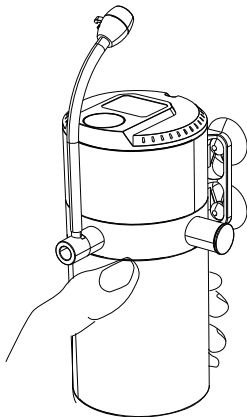


fig 5

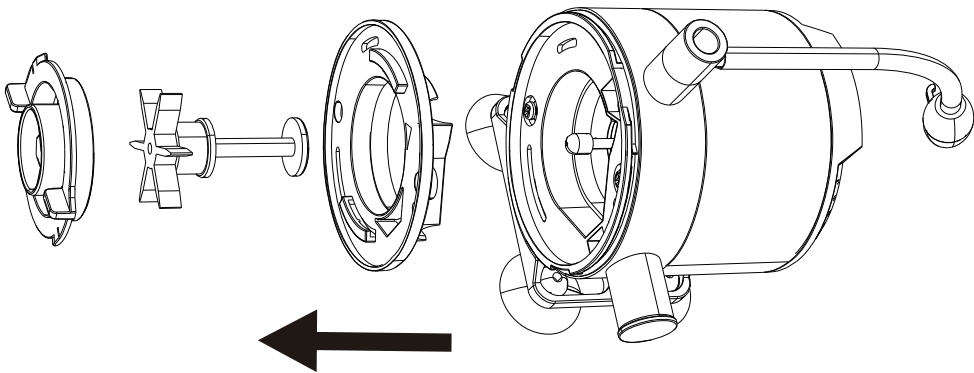


fig 6

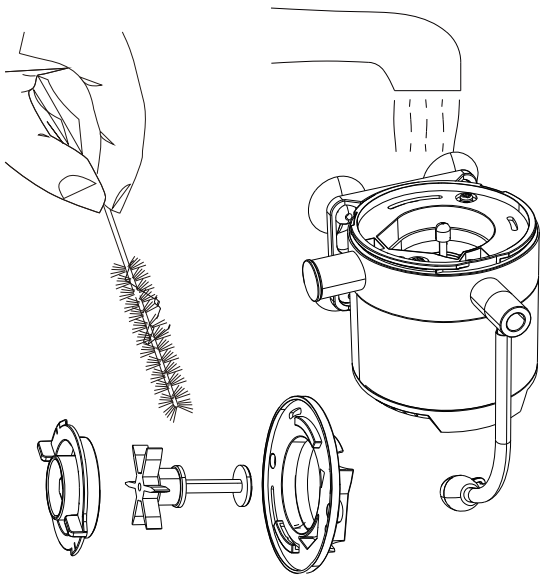


fig 7

5. TROUBLESHOOTING

Problems	Solutions
The filter is not working	The filter is disconnected from the power supply
	The mains voltage does not match the filter voltage
	Inlet or outlet is blocked
	Impeller or rotor is damaged
Low water flow	Mains voltage is lower than rated voltage
	The inlet or outlet are partially blocked
	The filtration system is dirty
Filter is making noise	The inlet is partially blocked
	The water level is lower than the filter inlet; Air is entering the filter and causing noise
	The rotor is worn (please replace)

6. IMPORTANT SAFETY CAUTIONS

1. When operating the appliance, please observe the rated voltage and rated frequency according to the label and operating instructions.
2. Install a residual current device with a rated output of 10mA or 30mA on the main power supply.
3. The cable on this appliance cannot be replaced. If the cable or plug shows signs of damage or wear, do not continue to use this filter. Do not attempt to shorten the cable or remove the plug. Failure to do so may damage the filter.
4. If you notice any unusual odors or noises in connection with the filter, disconnect the appliance from the power supply immediately and check it.
5. Your hands and the plug must be dry when plugging and unplugging the appliance. Plugging or unplugging with wet hands can lead to an electric shock.
6. The filter must be disconnected from the power supply before installation or cleaning work. To do this, do not jerk the cable, but carefully

pull the plug out of the socket.

7. Protect the filter accordingly. If the appliance has suffered an impact, check it for possible damage. If you find any cracks, the filter must not be put back into operation and must be disposed of.

8. Do not allow the filter to run dry to prevent damage to the rotor and overheating of the motor.

9. Do not operate or store at freezing temperatures.

10. Ensure that the filter is not blocked. Otherwise the water flow rate will drop and the impeller will no longer work properly.

11. Do not use in flammable or corrosive liquids. Please only operate the filter at water temperatures below 40 °C.

7. DISPOSAL

Do not dispose of this product as unsorted municipal waste. Collection of such waste separately for special treatment is necessary. This product must not be disposed of together with the domestic waste. This product has to be disposed of in an authorized place for recycling electrical and electronic appliances. By collecting and recycling waste, you help save natural resources, and make sure the product is disposed of in an environmentally friendly way.

8. AQQA LIMITED MANUFACTURER'S WARRANTY

We offer the end user of this product a manufacturer warranty of 2 years from the date of sale if this product was purchased from an AQQA[®]-authorised specialist dealer

Retain receipt for any future warranty claim. Conditions apply. Products are guaranteed by AQQA[®] Aquatic Supplies to the original purchaser against defective material and workmanship under normal use for a period up to 2 years from the date of the original purchase through an Authorized Dealer. Refer to the User Manual included with your product for specific warranty details.

Products have no warranty if:

- 1.) The product has been serviced, modified or tampered with by anyone other than AQQA[®] Aquatic Supplies.
- 2.) The product has been abused or damaged (including broken or cracked bulbs), and/or.
- 3.) The product has been transported without proper packaging.
- 4.) The product was purchased from an Unauthorized Reseller.

WARRANTY LIABILITY DISCLAIMER

In no event will AQQA[®] be liable for any consequential or incidental damages, including but not limited to, lost aquatic life, personal injury, property damage, equipment damage, lost profits, lost wages, lost savings, lost income, etc., arising out of the use of any AQQA[®] products.

1.0. Terms and Conditions of Warranty.

- 1.1. AQQA[®] warrants to the purchaser, for 2 years from date of original purchase through an Authorized AQQA[®] Reseller, free to repair or replace parts where fault is found due to defective materials or faulty workmanship and where goods do not operate in accordance with the instructions.
- 1.2. All claims for repair or replacement must be made at place of purchase.
- 1.3. Only the direct purchaser is entitled to warranty claims against us and these are not transferable without our consent.
- 1.4. The original and dated Proof of Purchase (receipt) must be supplied with all goods claims. Please also provide this Guarantee where possible.
- 1.5. Wear parts (e.g.: seals, suction devices, axes, pump wheels, light sources, pH electrodes, filter media, such as filter cartridges, as well as UVC burners), glass damage and the opening of the product, as well as structural changes or the use of non-AQQA[®] original parts are excluded from the guarantee.
- 1.6. All goods subject to claim under Guarantee should be prepared for transportation in the original packaging or other comparable packaging which offers the same degree of protection and AQQA[®] must incur no costs from the shipment.
- 1.7. Where claims on inspection reveal goods are in normal working order, AQQA[®] will request reimbursement of all reasonable costs incurred.
- 1.8. Warranty claims do not exist in the case of only insignificant deviations from the agreed or customary condition or usability, e.g. insignificant deviations in colour, dimensions and/or quality or performance characteristics of the products.

1.9. Our warranty obligation extends only to the delivery of newly manufactured products. Unless otherwise agreed, used products are sold as seen, excluding any warranty.

9. PACKING LIST

- 1x Filter with cord
- 1x Base
- 4x Rubber suction cup
- 1x Filter sponge (8W) 2x Filter sponge (12W)
- 1 bag of bio-ceramic balls
- 1x Air output regulator
- 1x Water outlet plug
- 1x Water nozzle for aeration
- 1x 50CM Air hose(4/6mm)
- 1x User manual

10. CONTACT INFORMATION

Company Name: Shenzhen Aiku Pet Technology Co., Ltd

Add: Room 501, No.20, Lane 1, Lishipai, Dafapu Community
Bantian Street, Longgang District, Shenzhen Guangdong. 518000

Email: service@aqqapet.com

Website: <http://www.aqqapet.com>

EC REP

Company Name:E-CrossStu GmbH
Address:Mainzer Landstr.69,Frankfurt am
Main,Hessen,60329
Email:E-CrossStu@web.de
Tel:+49 69332967674

UK REP

Company Name:YH Consulting Limited
Address:C/O YH Consulting Limited Office
147,Centurion House,London Road,Staines
-upon-Thames,Surrey,London,TW18 4AX
Email: H2YHUK@gmail.com
Tel:+44 07514-677868



MADE IN CHINA