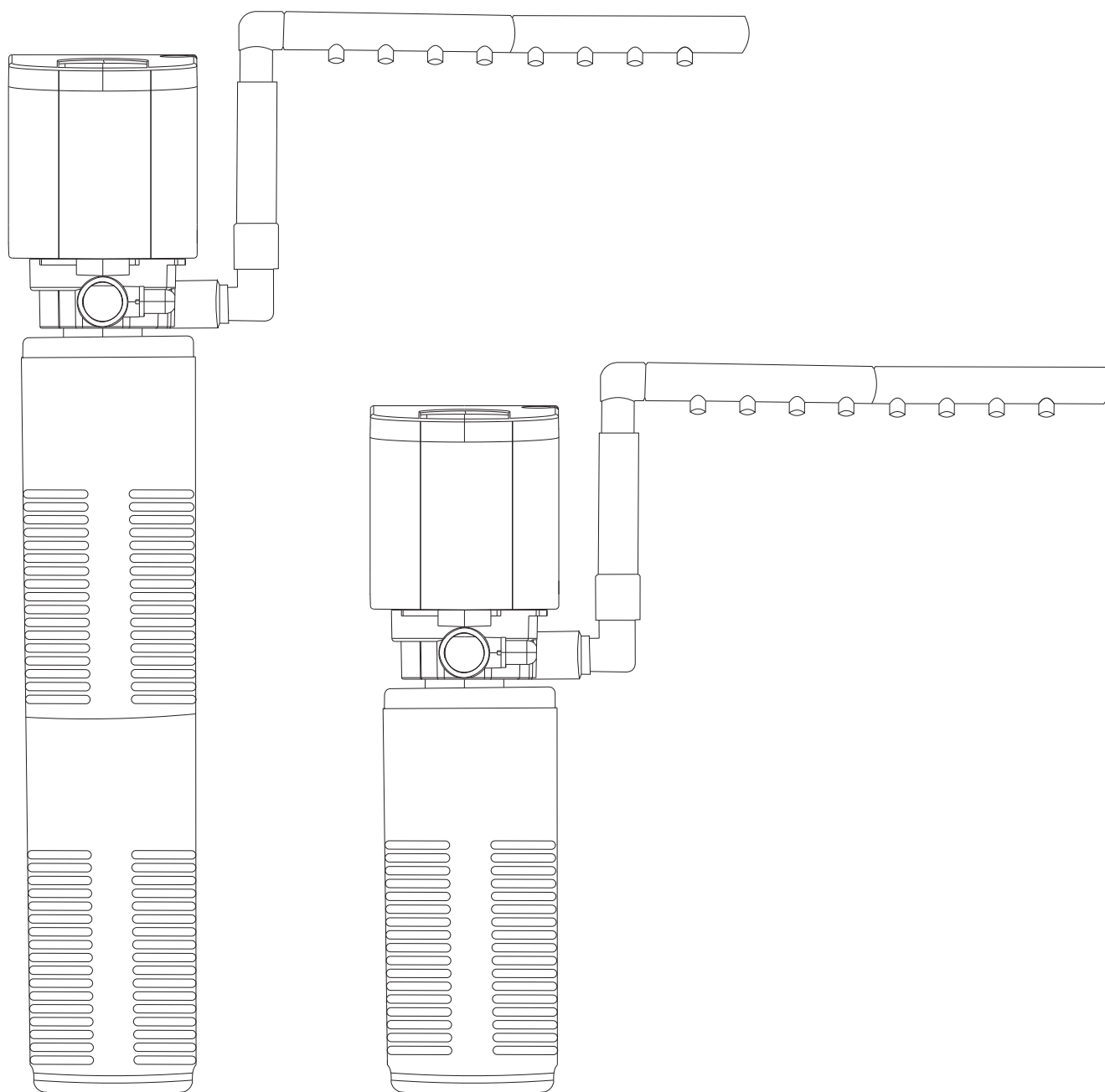




AQ070 USER MANUAL

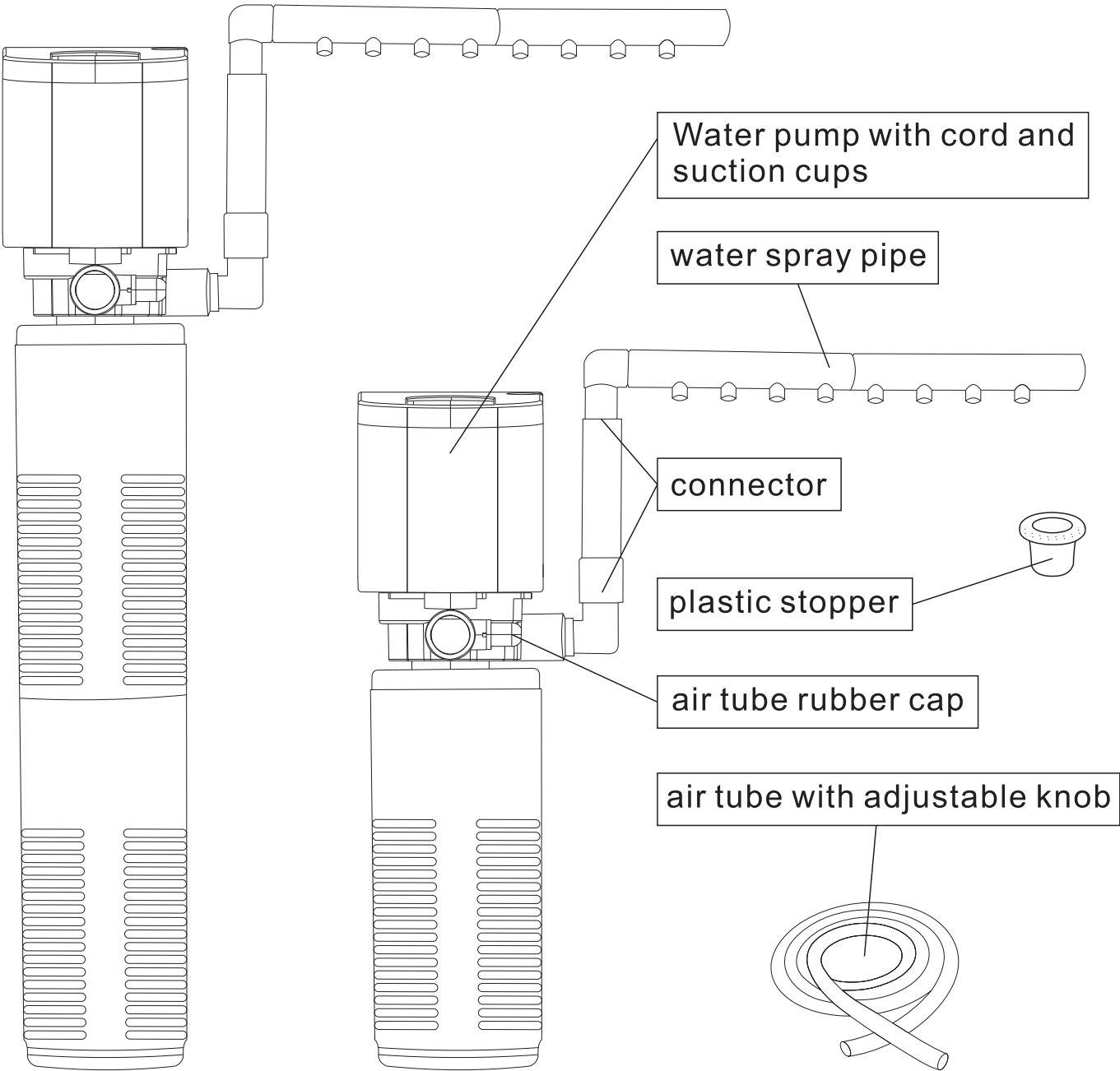
AQQA 4 in1 aquarium internal power filter AQ070



AQ070-18W

AQ070-12W

PRODUCT DIAGRAM



1. PRODUCT FEATURES

1) 4 in 1 Multi-functional:

- The activated carbon sponge purifies water quality and improves the cleanliness of the water in the aquarium.
- Ceramic balls provide a large surface area for the growth of beneficial bacteria, which can decompose harmful impurities and help maintain the ecological environment in the aquarium;
- Water outlet can be used for water circulation.
- Air inlet increases the oxygen level in the water.

2) **Classic Appearance Design:** With a special upper and lower drainage structure, the compact size can save space and be used even at low water levels. Customer-friendly disassembly and assembly design for easy use.

3) **Adjustable Flow Rate:** There is a water outlet to adjust the water flow rate according to customer needs.

4) **Super Powerful:** This filter is extremely powerful for adequate water circulations. The stainless steel motor impeller can be used for both freshwater and saltwater.

2.PRODUCTS SPECIFICATION:

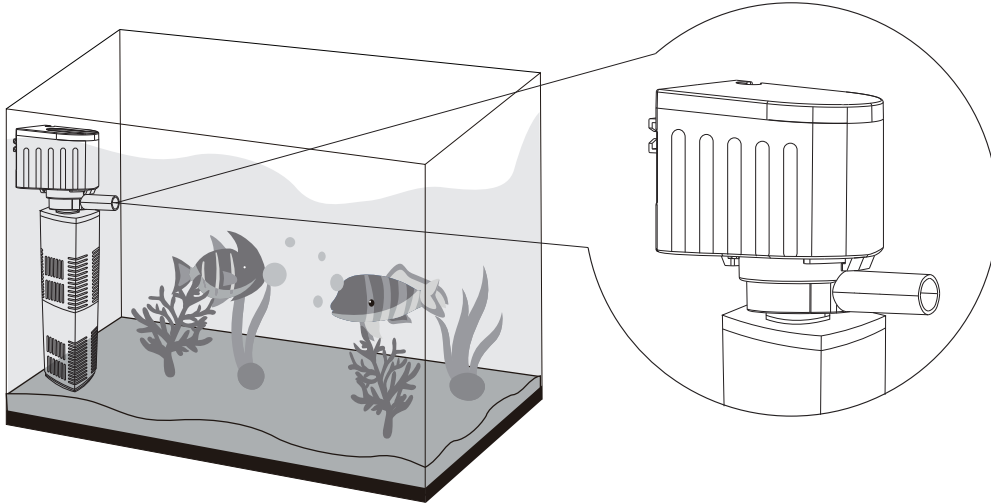
Item No.	AQ070-S	AQ070-L
Size	2.1"x2.3"x7.7" (5.3x5.8x19.5CM)	2.1"x2.3"x13" (5.3x5.8x33CM)
Location& Voltage	US standard:AC110-120V/60Hz EU/UK/AU standard: AC220-240V/50Hz	
Power	12W	18W
Flow	115GPH (430L/H)	164GPH (620L/H)
Head	2.8ft (0.8m)	3.9ft (1.2m)
Recommended aquarium size	≤30Gal(115L)	≤50Gal(189L)

3.METHOD OF APPLICATION

The filter can be used in multiple options.

Option 1

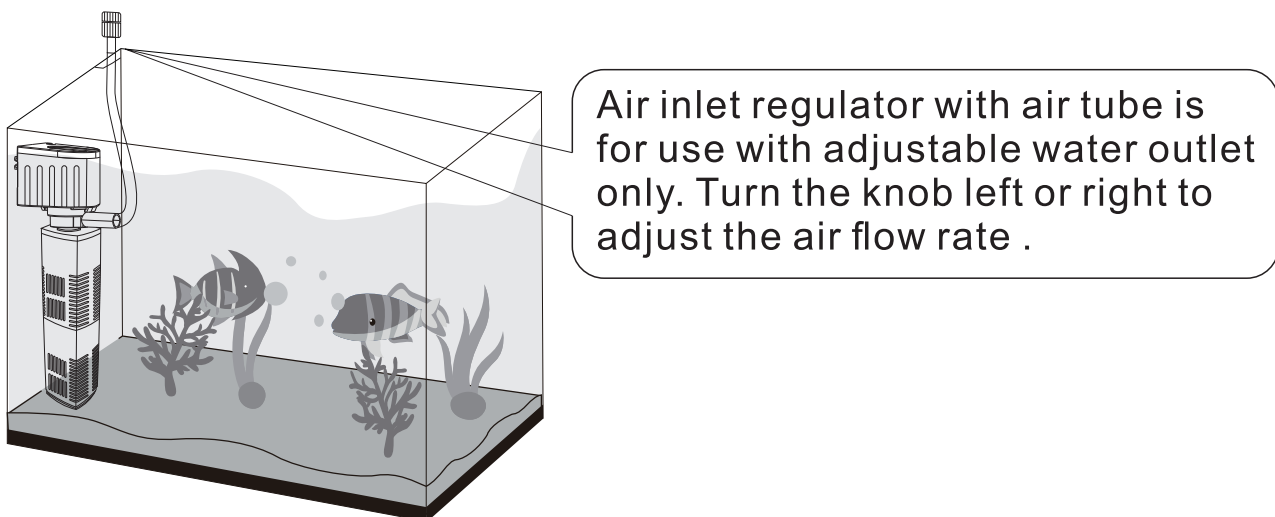
- 1) Use the suction cups to secure the filter to the aquarium wall.
- 2) Make sure the filter is fully submerged in water.
- 3) Then connect the filter to the power supply.



Option 2

With this option, air will be delivered to the outlet, creating bubbles that will help to oxygenate the water for fish in the aquarium.

- 1) Place the filter in the aquarium as in Option 1.
- 2) Make sure the airflow regulator is not submerged in water.
- 3) Connect the filter to the power supply.
- 4) Turn the air inlet regulator to adjust the airflow rate.

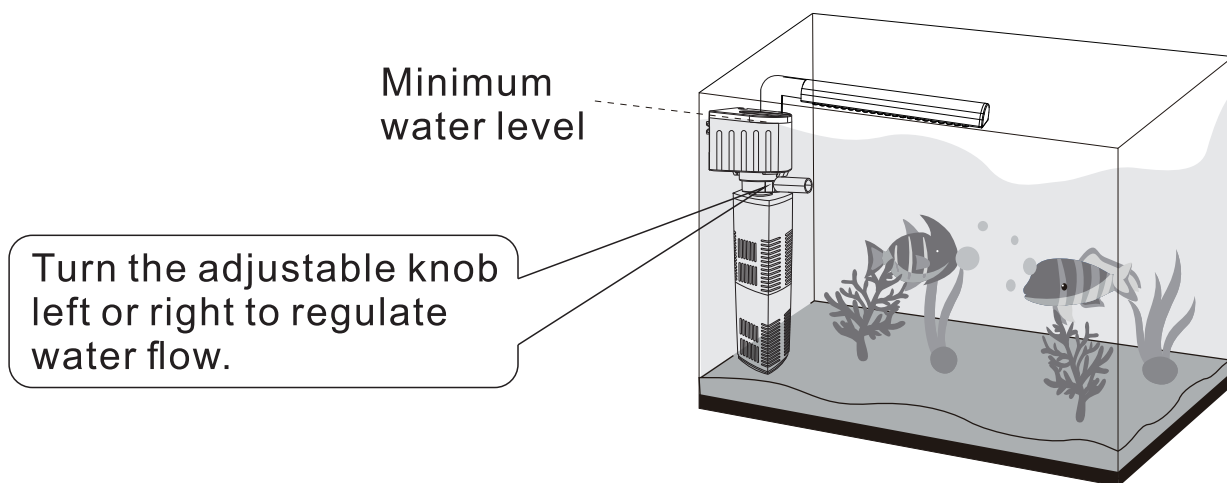


Option 3

When choosing this option, the spray bar will spray water evenly onto the water surface to help increase the oxygen in the water and stir the water surface in the aquarium.

- 1) Connect the spray bar to the outlet of the filter as shown in the diagram.
- 2) Place the filter in the aquarium as in Option 1, ensuring that the spray bar is placed horizontally.

Reminder: Make sure the filter is placed above the minimum water level.



1) Filter media replacement method

Note: It is recommended to replace the filter cartridge every 2 weeks to 1 month, depending on the number of fish, and how dirty or degraded the aquarium is.

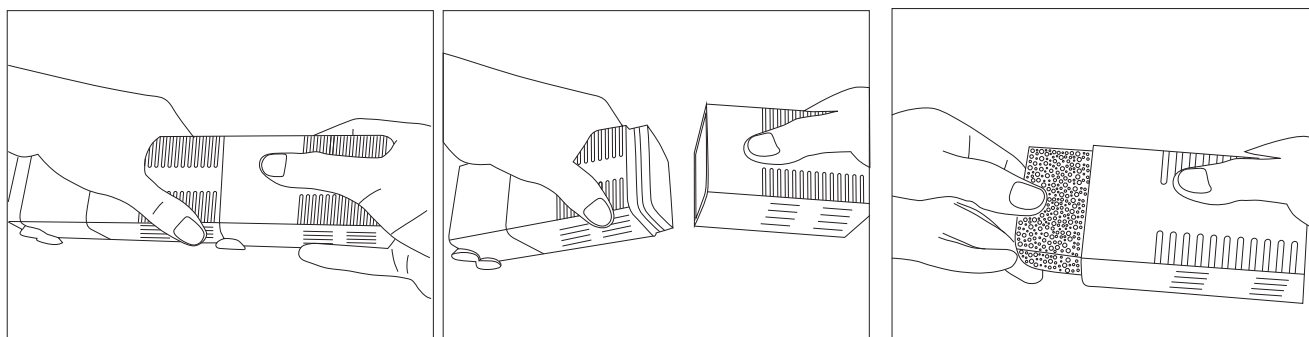
It is not recommended to clean the ceramic balls. It is recommended to replace them when they deteriorate.

To replace the carbon sponge, please follow the instructions below:

A) Hold the filter cages with both hands and pull to the sides.

B) Remove the carbon sponge for replacement and reinstall it after replacement.

Reminder: If the water output is significantly reduced, please replace the carbon sponge in time to ensure that the aquarium remains in optimal condition.



① Hold the filter with both hands → ② Pull to the sides → ③ Take out sponge

2) Replace the ceramic balls

Pull the filter cages out from the pump body. Remove the replacement ceramic balls and install new ones.

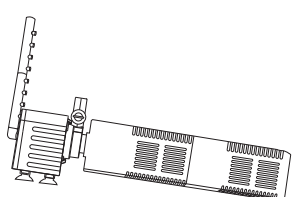


FIG1

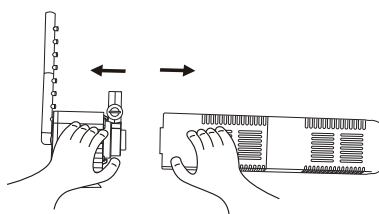


FIG2

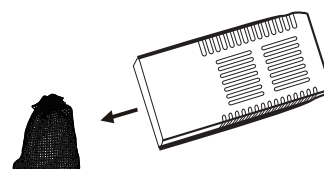


FIG3

3) Maintenance of the pump

Pull out the filter cages, take out the impeller for cleaning and then reinstall it.

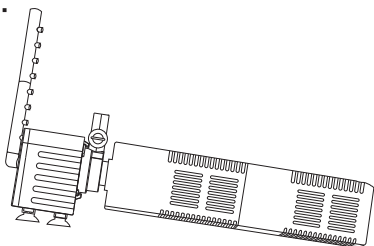


FIG4

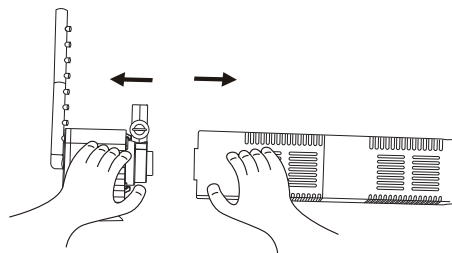


FIG5

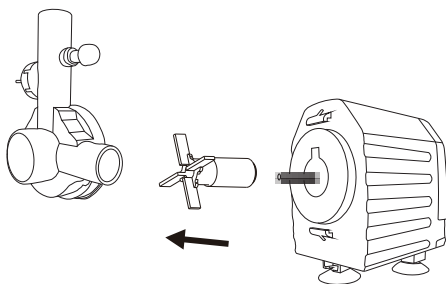


FIG6

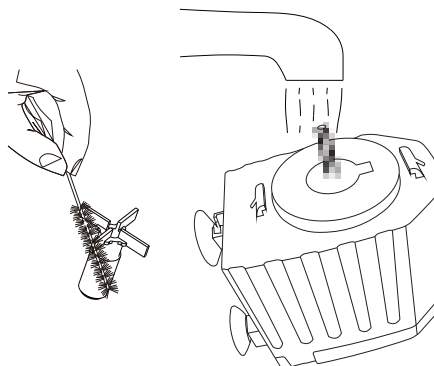


FIG7

4. TROUBLESHOOTING

Trouble	Solution
Pump doesn't work	Filter is not activated
	Mismatch between the main power supply and the specified power supply on the filter
	Inlet or outlet is blocked
	Impeller or rotor is damaged.
Reduced water flow	Voltage is lower than the rated voltage
	Partial blockage in the inlet or outlet
	Waste buildup in the filtration system
Filter has noise	Inlet is partially blocked
	Water level is lower than the inlet of the filter.
	Air is entering the filter causing noise.
	Rotor is worn (need to be replaced).

5.IMPORTANT SAFETY CAUTIONS

1. Please operate the equipment at the rated voltage and frequency as indicated on the rating label and user manual.
2. A residual current device with a rating of 10mA or 30mA must be installed on the main power supply.
3. The power cord cannot be replaced. If the power cord or plug shows signs of wear or damage, or aging, please stop using this filter immediately. Do not attempt to shorten the power cord or unplug it. Failure to comply with these rules may result in damage to the filter.
4. If an abnormal smell or noise is detected from the filter, please unplug it immediately and check for the cause.
5. When plugging or unplugging the filter, make sure your hand and the plug are dry. Do not plug or unplug the filter with wet hands, as this may result in an electric shock.
6. Before installing or cleaning the filter, unplug it. When unplugging, do not pull the power cord suddenly, but hold the plug gently and remove it from the socket.
7. Properly protect the filter. If the filter suffers a severe impact, check if there is any damage. If there is any breakage, stop using the filter and dispose of it.
8. Do not let the filter run dry without water, as this will damage the rotor and will cause overheating of the motor.
9. Do not operate or place the filter in a freezing environment.
10. Always keep the filtering part from being clogged. Otherwise, the flow rate will decrease and the impeller will stop working.
11. Do not use the filter in inflammable or corrosive liquids. The filter should be operated in an environment less than 104 °F.

6. DISPOSAL

Do not dispose of this product as unsorted municipal waste. Collection of such waste separately for special treatment is necessary. This product must not be disposed of together with the domestic waste. This product has to be disposed of in an authorized place for recycling electrical and electronic appliances. By collecting and recycling waste, you help save natural resources, and make sure the product is disposed of in an environmentally friendly way.

7.ONE YEAR LIMITED WARRANTY

This product **MUST** be purchased from an authorized AQQA reseller. Visit our website for a list of authorized resellers. AQQA warrants this product against defects in materials and workmanship for **ONE (1) YEAR** from the date of the original retail purchase and is non-transferable. Warranty on all products, including aquariums. But it is limited to the

replacement of the products and does not cover fish loss, personal injury, property loss or direct, incidental or consequential damage caused by using this product.

Note: AQQA One-year Limited Warranty does not cover damage caused by the followings: improper installation, saltwater corrosion, electrical surges or modifications. Additionally, products that have been refunded are also not covered under the warranty.

If you discover a defect, please contact AQQA, who will, at its option, repair or replace the product at no charge, provided that you return it during the warranty period. A copy of the bill of sale is required as proof of the original purchase date in the event of the product needing repairs within the warranty period. AQQA does not warrant any products that are not AQQA's. This warranty does not apply if the product has been damaged by accident, abuse, misuse or misapplication, or modified without the written permission of AQQA.

8. PACKING LIST

1x Water pump with cord and suction cups
2x Water spray pipe
1x Z shape connector
1x Air tube rubber cap
1x Plastic stopper
1x 40CM air tube(4/6mm)
4x Suction cup
1x User manual

9. CONTACT INFORMATION

Company Name: Shenzhen Aiku Pet Technology Co., Ltd
Add: Room 501, No.20, Lane 1, Lishipai, Dafapu Community
Bantian Street, Longgang District, Shenzhen Guangdong. 518000
Email: service@aqqapet.com
Website: <http://www.aqqapet.com>



@AQQA Aquarium



Company: E-CrossStu GmbH
Address: Mainzer Landstr.69, 60329
Frankfurt am Main
Email: E-crossStu@web.de
Nr.202504727907



Company Name: YH Consulting Limited
Address: C/O YH Consulting Limited Office
147 Centurion House, London Road
Staines-upon-Thames, Surrey, TW18 4AX
Email: H2YHUK@gmail.com
Tel: +44 07514-677868
No.202504725766