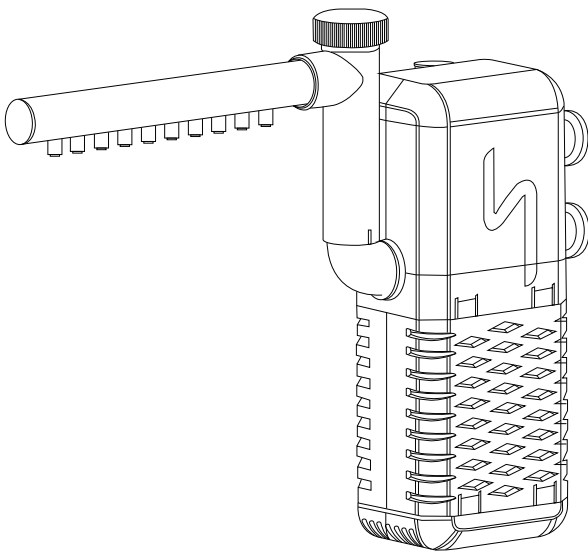
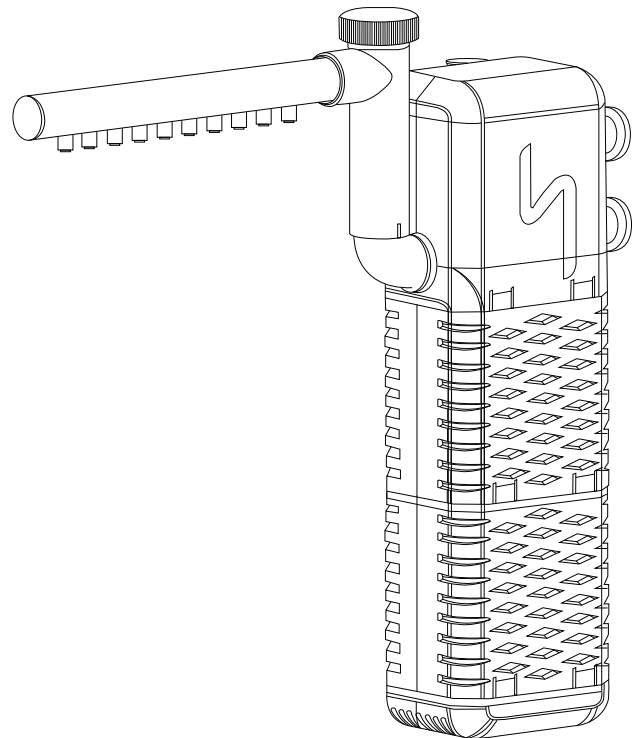


AQ047 USER MANUAL

AQQA 3 in1 AQUARIUM INTERNAL POWER FILTER



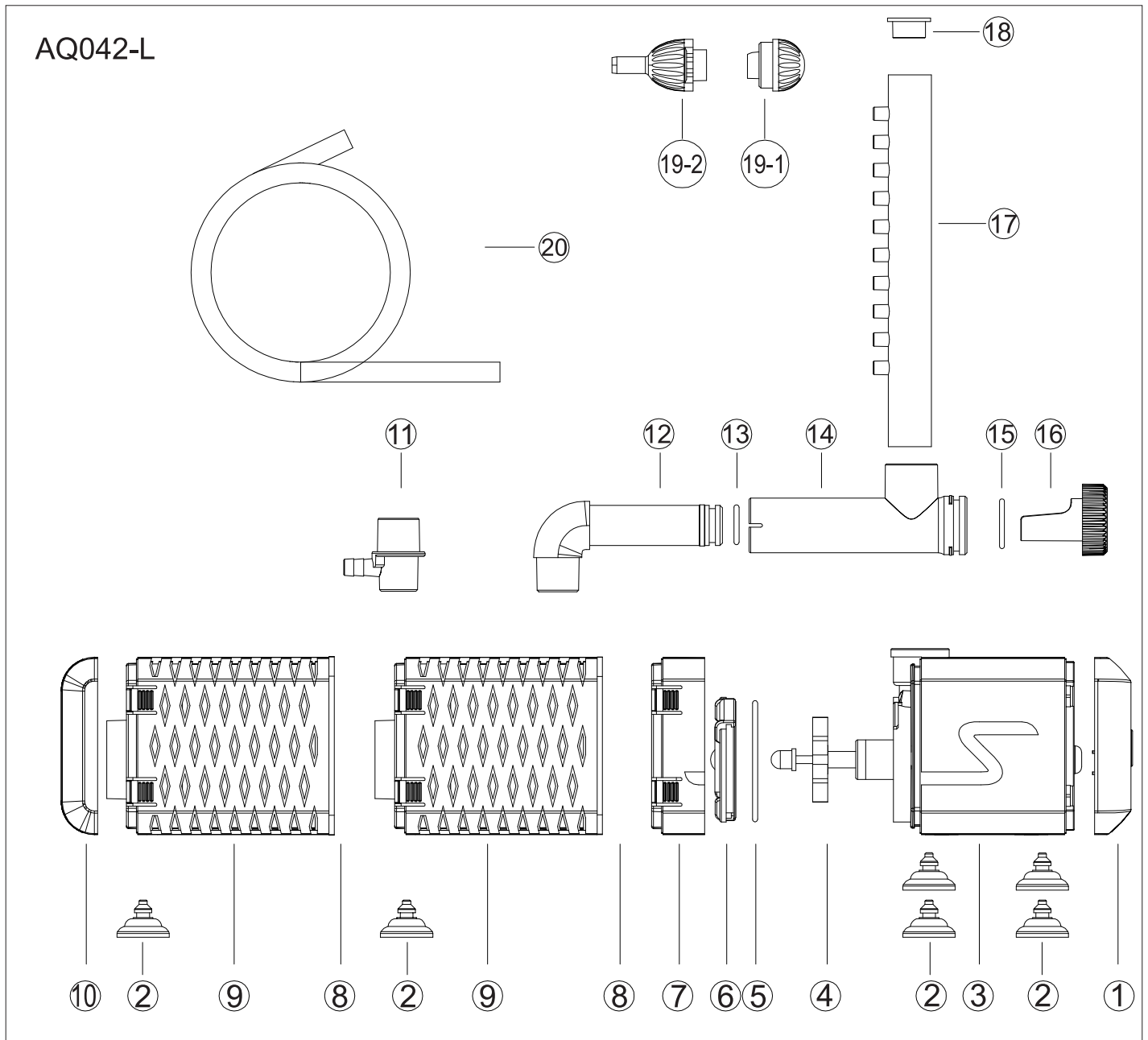
AQ042-M



AQ042-L

This product is made of high-quality and safe materials and is suitable for small fish tanks, aquariums, and places with the function of circulating water.

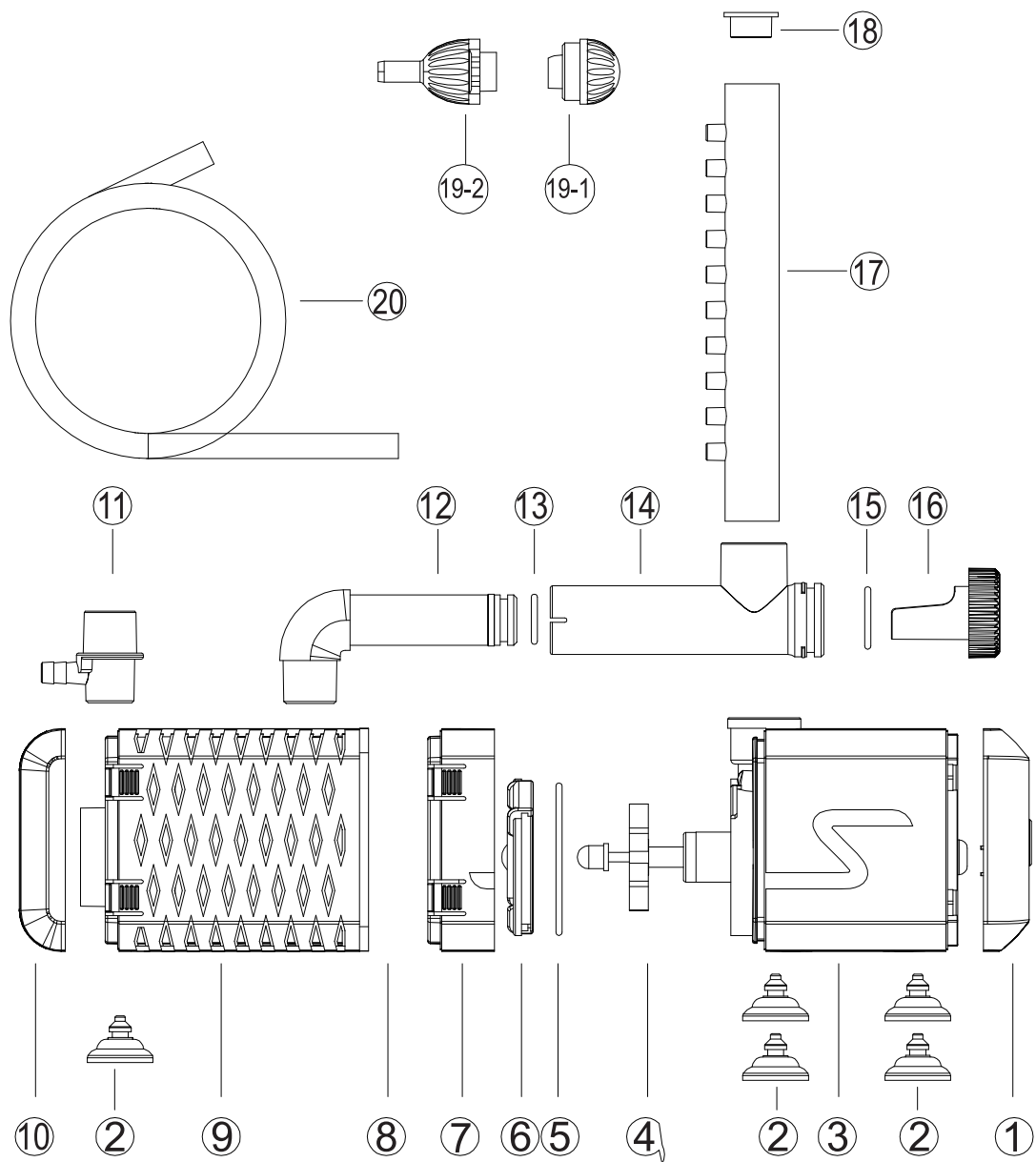
1.PRODUCT DIAGRAM



Parts List:

- | | | |
|-------------------------|--------------------------|----------------|
| 1.Front cover | 2.Suction cup | 3.Pump body |
| 4.Rotor | 5.Waterproof ring | 6.Rotor cover |
| 7.Back Cover | 8.Filter foam | 9.Filter cover |
| 10.Bottom cover | 11.Aeration nozzle | |
| 12.Rainwater pipe elbow | 13.Elbow waterproof ring | |
| 14.Extersion pipe | 15.Knob waterproof ring | |
| 16.Flow adjusting knob | 17.Rainwater pipe | 18.Plug |
| 19.Air adjusting knob | 20.Air tube | |

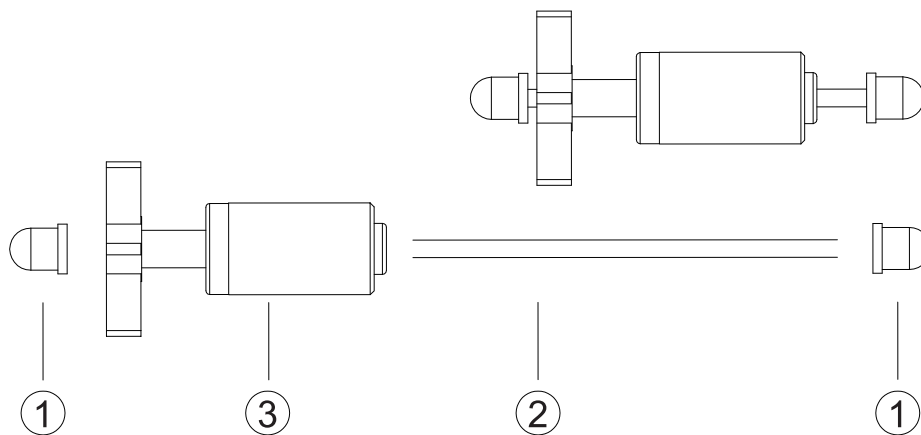
AQ042-M



Parts List:

- | | | |
|--------------------------|---------------------------|-----------------|
| 1. Front cover | 2. Suction cup | 3. Pump body |
| 4. Rotor | 5. Waterproof ring | 6. Rotor cover |
| 7. Back Cover | 8. Filter foam | 9. Filter cover |
| 10. Bottom cover | 11. Aeration nozzle | |
| 12. Rainwater pipe elbow | 13. Elbow waterproof ring | |
| 14. Extension pipe | 15. Knob waterproof ring | |
| 16. Flow adjusting knob | 17. Rainwater pipe | 18. Plug |
| 19. Air adjusting knob | 20. Air tube | |

Rotor



Parts List:

1. Shaft sleeve

2. Stainless steel shaft

3. Rotor

2.PRODUCT FEATURES

①**Unique and novel appearance design:** Special structure for above and below draining, small shape saves tank space with efficient water use. Humanized disassembly and assembly design, easy to use.

②**Multiple functions:** Pre-filtration, wave maker function, oxygen enhancement.

③**Adjustable flow rate:** Two options for water draining and wave maker. The flow rate can be adjusted for your fish and turtle.

④**Convenient cleaning:** Directly separate the filter housing to take out the filter sponge for cleaning.

⑤**Supper silent:** High-quality silent and durable pump.

Stainless steel motor impeller allows use in freshwater and salt water.

3.PRODUCT SPECIFICATIONS

Item No.	AQ047-M	AQ047-L
Volt/Freq	US standard:AC110-120V/60Hz UK/EU standard: AC220-240V/50Hz	
Power	6W	9W
Flow	158GPH(600L/H)	211GPH(800L/H)
Head	2.6ft/0.8m	3.6ft/1.1m

4.INSTRUCTIONS

- ①Unpack and take out the filter. Check whether the filter is damaged or the power cord is damaged.
- ②Can't be used for saltwater tanks.
- ③Immerse the product below the minimum water level when using.
- ④The filter must be completely immersed in water when working, and not exposed to the water surface, otherwise, it will cause permanent damage to the filter.
- ⑤If the product fails or not working properly, stop using it, do not arbitrarily overhaul it, and contact the dealer as soon as possible.

5.ATTENTIONS

- √ Please read this user manual carefully before using it and follow it strictly.
- √ Please keep the power supply away from water since it is not waterproof.
- √ Please keep the pump away from flammable items to avoid accidents.
- √ Please unplug the power and contact the seller if the filter is not working properly.

****OPENING WILL VOID WARRANTY****

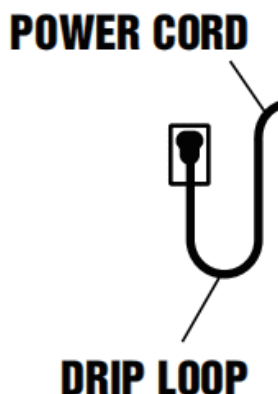
- √ Please unplug the power before maintenance.
- √ Please mind that the operating temperature range for the filter is between 40°F~95°F (4°C~35°C).

6.WARNING

To avoid possible electric shock, do not immerse the switch in the water. If the switch falls into the water or becomes wet, do not touch it until you have unplugged it. Basic safety precautions that should be observed are as follows:

1. Read and follow this user manual strictly.
2. DANGER- To avoid possible electric shock, special care should be taken since water is employed in the use of aquarium equipment. For each of the following situations, do not attempt to repair yourself. Instead, return the filter to an authorized service facility for maintenance or discard it.
 - A.If the appliance falls into the water, DO NOT touch it. First unplug it, then retrieve it. If the electrical components of the appliance get wet, unplug them immediately.
 - B.Carefully examine the filter after installation. It should not be plugged in if there is water on parts that are not intended to be wet.
 - C.Do not operate the filter if it has a damaged cord or plug, is malfunctioning, dropped, or damaged in any manner. The power cord of this filter cannot be replaced. If the cord is damaged, the filter should be discarded.

D.To avoid the possibility of the filter plug getting wet, position the aquarium and its stand to one side of a wall-mounted outlet to prevent water from dripping onto the outlet or plug. A "drip loop", shown in the figure below, should be arranged by the user for each cord, which connects the filter to the outlet. If an extension cord is used, the "drip loop" is the part of the cord below the level of the outlet or the connector that prevents water from traveling along the cord and coming in contact with the outlet. If the plug or outlet does get wet, DO NOT unplug the cord. Disconnect the fuse to the circuit breaker that supplies power to the filter. Then, unplug and examine for the presence of water in the outlet. If you are not sure, consult a certified electrician.



3. Close supervision is necessary when the filter is used near children.
4. This filter is not allowed to use by persons (including children) with reduced physical sensory or mental capabilities, or lack of experience and knowledge unless they have been given supervision or instruction concerning the use of the filter by a person responsible for their safety.
5. To avoid injury, do not contact moving or hot parts.
6. Always unplug the filter from the outlet when not in use, before putting on or taking off parts, maintenance, or placing hands in the water. Never yank the cord to pull the plug from the outlet. Grasp the plug and pull to disconnect.
7. Do not use the filter for other than intended use. The use of attachments not recommended or sold by the appliance manufacturer may cause an unsafe condition and will void the warranty.
8. Do not install or store the filter where it will be exposed to extreme weather or temperatures below freezing.
9. Make sure the filter is securely installed before operating it.
10. Read and observe all the important notices on the filter.
11. If an extension cord is necessary, a cord with a proper rating should be used, such as rated amperes or watts. A cord rated for fewer amperes or watts than the filter rating may overheat. Care should be taken to arrange the cord so that it will not be tripped over or pulled.
12. The filter is intended FOR HOUSEHOLD USE ONLY.
13. SAVE THIS USER MANUAL.

7.AQQA LIMITED MANUFACTURER'S WARRANTY

We offer the end user of this product a manufacturer warranty of 2 years from the date of sale if this product was purchased from an AQQA®-authorised specialist dealer.

Retain receipt for any future warranty claim. Conditions apply. Products are guaranteed by AQQA® Aquatic Supplies to the original purchaser against defective material and workmanship under normal use for a period up to 2 years from the date of the original purchase through an Authorized Dealer. Refer to the User Manual included with your product for specific warranty details.

WARRANTY LIABILITY DISCLAIMER:

In no event will AQQA® be liable for any consequential or incidental damages, including but not limited to, lost aquatic life, personal injury, property damage, equipment damage, lost profits, lost wages, lost savings, lost income, etc., arising out of the use of any AQQA® products.

1.0 Terms and Conditions of Warranty.

- 1.1 AQQA® warrants to the purchaser, for 2 years from date of original purchase through an Authorized AQQA® Reseller, free to repair or replace parts where fault is found due to defective materials or faulty workmanship and where goods do not operate in accordance with the instructions.
- 1.2 All claims for repair or replacement must be made at place of purchase.
- 1.3 Only the direct purchaser is entitled to warranty claims against us and these are not transferable without our consent.
- 1.4 The original and dated Proof of Purchase (receipt) must be supplied with all goods claims. Please also provide this Guarantee where possible.
- 1.5 Wear parts (e.g.: seals, suction devices, axes, pump wheels, light sources, pH electrodes, filter media, such as filter cartridges, as well as UVC burners), glass damage and the opening of the product, as well as structural changes or the use of non-AQQA® original parts are excluded from the guarantee.
- 1.6 All goods subject to claim under Guarantee should be prepared for transportation in the original packaging or other comparable packaging which offers the same degree of protection and AQQA® must incur no costs from the shipment.
- 1.7 Where claims on inspection reveal goods are in normal working order, AQQA® will request reimbursement of all reasonable costs incurred.
- 1.8 Warranty claims do not exist in the case of only insignificant deviations from the agreed or customary condition or usability, e.g. insignificant deviations in colour, dimensions and/or quality or performance characteristics of the products.
- 1.9 Our warranty obligation extends only to the delivery of newly manufactured products. Unless otherwise agreed, used products are sold as seen, excluding any warranty.

8.DISPOSAL

Do not dispose of this product as unsorted municipal waste. Collection of such waste separately for special treatment is necessary. This product has to be disposed of at an authorized place for the recycling of electrical and electronic appliances rather than being disposed of together with the domestic waste. Collecting and recycling waste is a way of saving natural resources. So, please consult with your local seller to make sure the product is disposed of in an environmentally friendly way.



9.PACKING LIST

1 x Filter
1 x Rainwater pipe
1 x Aeration tube
1 x Spare suction cup

10.CONTACT INFORMATION

Company Name: Shenzhen Aiku Pet Technology Co., Ltd
Add: Room 501, No.20, Lane 1, Lishipai, Dafapu Community
Bantian Street, Longgang District, Shenzhen Guangdong. 518000
Email: service@aqqapet.com
Website: <http://www.aqqapet.com>



@AQQA Aquarium



Company: E-CrossStu GmbH
Address: Mainzer Landstr.69, 60329
Frankfurt am Main
Email: E-crossStu@web.de
Nr.202504727907



Company Name: YH Consulting Limited
Address: C/O YH Consulting Limited Office
147 Centurion House, London Road
Staines-upon-Thames, Surrey, TW18 4AX
Email: H2YHUK@gmail.com
Tel: +44 07514-677868
No.202504725766



MADE IN CHINA