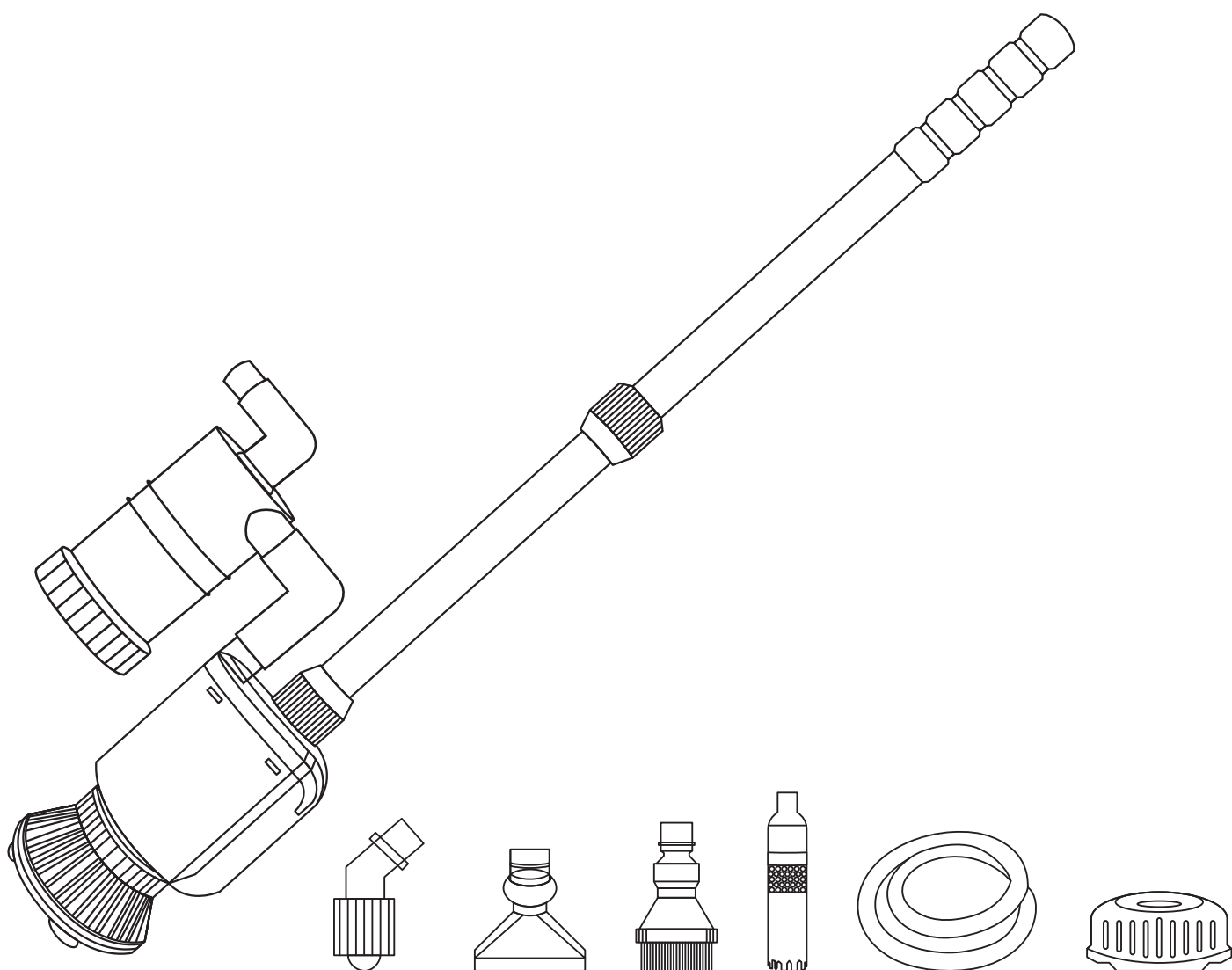




AQQA AQ038 Multifunctional Vacuum Gravel Cleaner User Manual



The electric AQQA Vacuum Gravel Cleaner is a multifunctional device that allows you to clean the aquarium gravel, wash sand, and change the water. Please read these operating instructions carefully before using the device and follow them.

***** The switch is not waterproof and must, therefore, not get wet *****

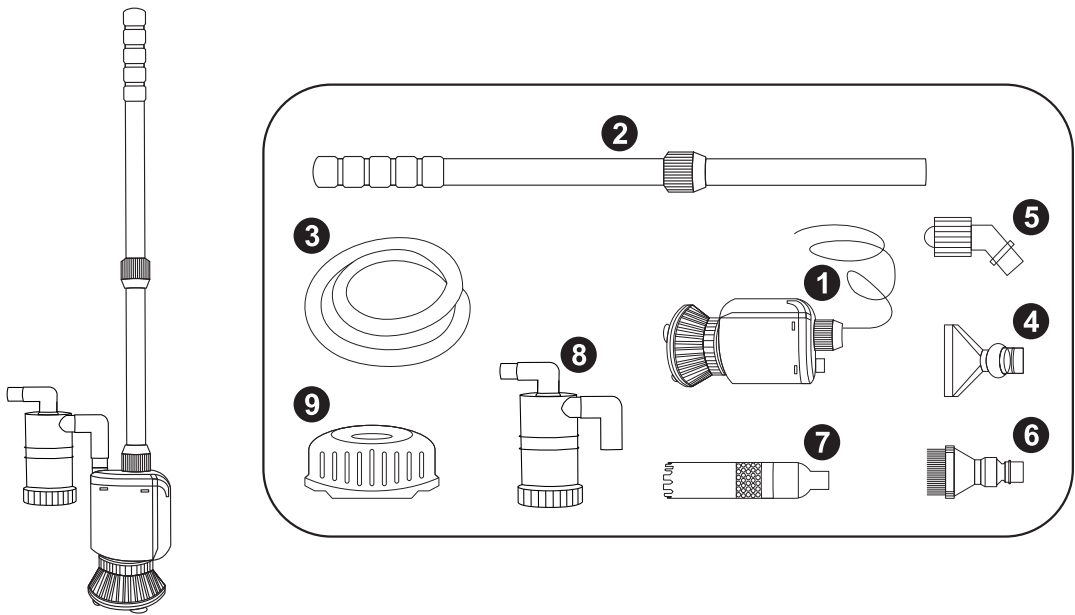
1.PRODUCT FEATURES

- Multifunctional:** The vacuum gravel cleaner suits various aquarium applications such as water changes, sand removal, and gravel cleaning.
- Strong Suction Power:** The water pump of the vacuum gravel cleaner ensures a strong flow, fast, efficient water changes, and thorough removal of dirt from the aquarium.
- Extendable:** The vacuum gravel cleaner has two extension tubes that allow you to adapt flexibly to different aquarium heights. The tubes can be extended from 16.9 inches (42.9CM) to 33.6 inches (85.3CM), with an overall length of 38.4 inches (97.5CM).
- Simple operation:** Assembly and use are exceptionally user-friendly. The various attachments are ideal for use in both large and small aquariums.




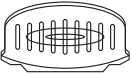
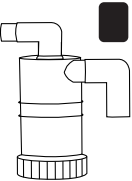
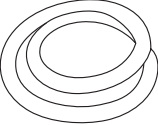
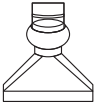
2.PRODUCT SPECIFICATIONS

Model	AQ038
Power	20W
H-max	5.9ft/1.7m
Q-max	320GPH/1200L/H
Voltage	US Standard: 110-120V/60Hz EU/UK Standard: 220-240V/50Hz
Cord Length	0.5m+1.8m(1.6ft+5.9ft)
Water tube	1.5m(4.9ft)

3.ACCESSORIES AND ASSEMBLY INSTRUCTIONS



1 Water pump x 1	2 Extension tube x 2	3 Water tube (1.5m/4.9ft) x 1
4 Widened top for dirt removal x 1	5 Corner anti-sand top x 1	6 Cleaning brush x 1
7 Filter housing with filter sponge x 1	8 Gravel cleaner with filter sponge x 1	9 Inlet strainer x 1

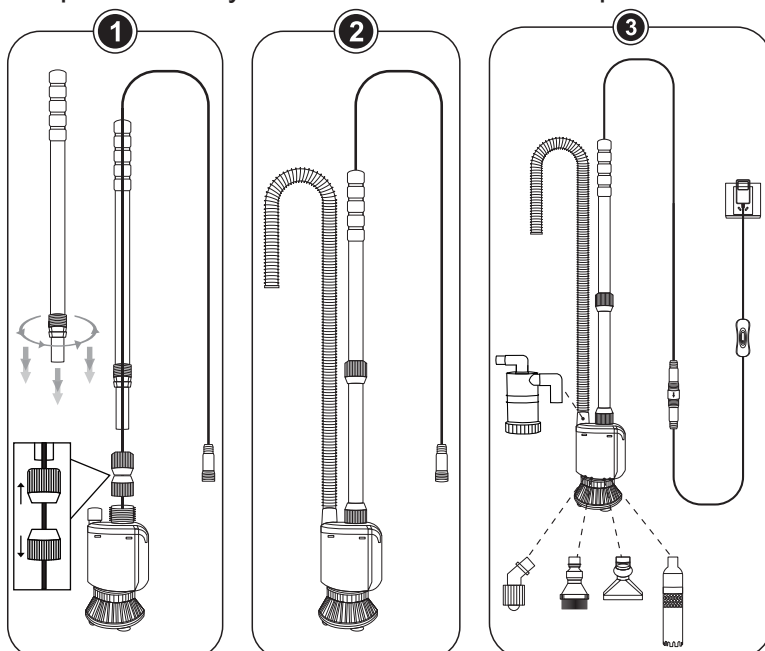
	Cleaning brush	For aquarium cleaning
	Corner anti-sand top	Prevent small fish or stones from being sucked in
	Filter housing with filter sponge	For collecting fine dirt
	Inlet strainer	Keep larger gravel stones out of the pump and thus prevent blockages
	Gravel cleaner with filter sponge	Suitable for vacuuming dirt and mulm in the substrate, fish droppings, and plant residues
	Water tube (1.5m/4.9ft)	For water change, it can be combined with the enclosed pump
	Widened top for dirt removal	Can be rotated 360° for effective mulm removal in all angles and corners of the aquarium

4.INSTALLATION INSTRUCTIONS

Step 1: Turn and pull out the inner tube, and then insert the cable into the extension tube using the plastic screw. Screw it tightly.

Step 2: Attach the gravel cleaner and water tube to the filter housing.

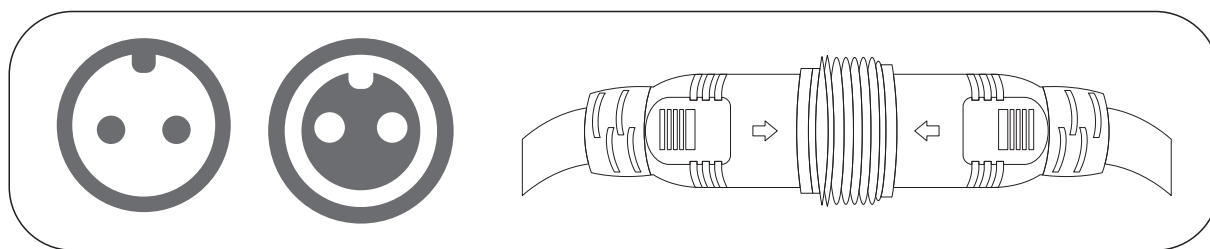
Step 3: Install your desired tools as required.



Attentions:

- ✓ The attachment for changing the water can be easily attached to the vacuum gravel cleaner.
- ✓ You can replace the filter sponge with suitably sized sponges or filter inserts from other manufacturers.
- ✓ Insert the cable into the correct bayonet and lock it securely with the plastic screw.

Please see the pictures below:



The AQQA's cable or adapter cannot be used with other brands' products. Otherwise, accidents may occur.

5.WARNING

To guard against injury, basic safety precautions should be observed including the following.

1.Read and follow this user manual strictly.

2.DANGER-To avoid possible electric shock, special care should be taken since water is employed in the use of aquarium equipment. For each of the following situations, do not attempt to repair yourself; return the gravel cleaner to an authorized service facility for service or discard the gravel cleaner.

A.If the gravel cleaner shows any sign of abnormal water leakage or RCD (or GFCI-Ground Fault Current Interrupter), unplug from power and remove the gravel cleaner from water.

B.Carefully examine the gravel cleaner after installation. It should not be plugged in if there is water on parts not intended to be wet.

C.Do not operate the gravel cleaner if it has a damaged cord or plug, if it is malfunctioning or if it is dropped or damaged in any manner. The power cord of this gravel cleaner cannot be replaced, if the cord is damaged, the gravel cleaner should be discarded.

D.To avoid the possibility of the gravel cleaner plug getting wet, position aquarium stand and tank to one side of a wall mounted outlet to prevent water from dripping onto the outlet or plug. A "drip loop", shown in the figure below, should be arranged by the user for each cord connecting the D.gravel cleaner to the outlet. The "drip loop" is the part of the cord below the level of the outlet, or the connector. If an extension cord is used, to prevent water traveling along the cord and coming in contact with the outlet. If the plug or outlet does get wet, DO NOT unplug the cord. Disconnect the fuse to the circuit breaker that supplies power to the gravel cleaner. Then unplug and examine for the presence of water in the outlet.

POWER CORD



DRIP LOOP

3.Close supervision is necessary when the gravel cleaner is used near children.

4.This gravel cleaner is not allowed to use by persons (including children) with reduced physical, sensory or mental capabilities, or lack of experience and knowledge, unless they have been given supervision or instruction concerning use of the gravel cleaner by a person responsible for their safety.

5.To avoid injury, do not contact moving parts or hot parts.

6.Always unplug the gravel cleaner from the outlet when not in use, before putting on or taking off parts, and before 6.maintenance or placing hands in the water. Never yank the cord to pull plug from outlet. Grasp the plug and pull to disconnect.

7.Do not use the gravel cleaner for other than intended use. The use of attachments not recommended or sold by the appliance manufacturer may cause an unsafe condition.

8.Do not install or store the gravel cleaner where it will be exposed to the weather or to temperatures below freezing. This 8.gravel cleaner is suitable for use in water temperatures 40~ 95°F (4.5~35°C) .

9. Do not submerge more than 3ft of water depth.
10. Do not run dry or out of water. Keep the gravel cleaner completely submerged.
11. Only use in freshwater or saltwater, do not use the gravel cleaner in other liquids.
12. Make sure the gravel cleaner is securely installed before operating.
13. Read and observe all the important notices on the gravel cleaner.
- If an extension cord is necessary, a cord with a proper rating 14. should be used. A cord rated for less amperes or watts than the appliance rating may overheat. Care should be taken to arrange the cord so that it will not be tripped over or pulled.
15. The gravel cleaner is intended FOR HOUSEHOLD USE ONLY. Do not use or mount this gravel cleaner in such a way that the top vents are restricted or blocked. These vents are necessary to avoid overheating and ensure safe operating temperatures.
- All gravel cleaners are professionally water tested by the manufacturer before shipment; if the gravel cleaner you 16. received has a little water, please don't worry, this is the result of the testing process. You will receive a new gravel cleaner.
17. SAVE THIS USER MANUAL.

6. TROUBLESHOOTING

PROBLEM	REASON	SOLUTION
The cleaner is not working	The power is not on	Insert the plug into the socket
	The cleaner is damaged	Replace the cleaner
	The impeller is blocked	Remove the impeller and clean it
	The cleaner runs outside the water	Immerse the vacuum gravel cleaner further
Noise generation	The motor is blocked	Remove the motor and clean it
	The motor is worn or damaged	Replace the motor
Insufficient water flow	Impeller is damaged	Replace the impeller

7. PACKING LIST

- | | |
|---------------------------------|--------------------------------------|
| 1x Water pump with power cord | 1x Gravel cleaner with filter sponge |
| 2x Extension tube | 1x Water tube (1.5m/4.9ft) |
| 1x Widened top for dirt removal | 1x Filter housing with filter sponge |
| 1x Corner anti-sand top | 1x Adapter |
| 1x Inlet strainer | 1x User manual |
| 1x Cleaning brush | |

8. ONE YEAR LIMITED WARRANTY

This product **MUST** be purchased from an authorized AQQA reseller. Visit our website for a list of authorized resellers. AQQA warrants this product against defects in materials and workmanship for ONE(1) YEAR from the date of the original retail purchase and is non-transferable.

Warranty on all products, including aquariums. But it is limited to the replacement of the products and does not cover fish loss, personal injury, property loss or direct, incidental or consequential damage caused by using this product.

Note: AQQA One-year Limited Warranty does not cover damage caused by the followings: improper installation, saltwater corrosion, electrical surges or modifications.

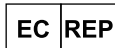
Additionally, products that have been refunded are also not covered under the warranty. If you discover a defect, please contact AQQA, who will, at its option, repair or replace the product at no charge, provided that you return it during the warranty period. A copy of the bill of sale is required as proof of the original purchase date in the event of the product needing repairs within the warranty period. AQQA does not warrant any products that are not AQQA's. This warranty does not apply if the product has been damaged by accident, abuse, misuse or misapplication, or modified without the written permission of AQQA.

9.DISPOSAL

Do not dispose of this product as unsorted municipal waste. Collection of such waste separately for special treatment is necessary. This product has to be disposed of at an authorized place for the recycling of electrical and electronic appliances rather than being disposed of together with the domestic waste. Collecting and recycling waste is a way of saving natural resources. So, please consult with your local seller to make sure the product is disposed of in an environmentally friendly way.

10.CONTACT INFORMATION

Company Name: Shenzhen Aiku Pet Technology Co., Ltd
Add: Room 501, No.20, Lane 1, Lishipai, Dafapu Community
Bantian Street, Longgang District, Shenzhen Guangdong. 518000
Email: service@aqqapet.com
Website: <http://www.aqqapet.com>



Company Name:E-CrossStu GmbH
Address:Mainzer Landstr.69,Frankfurt am
Main,Hessen,60329
Email:E-CrossStu@web.de
Tel:+49 69332967674



Company Name:YH Consulting Limited
Address:C/O YH Consulting Limited Office
147,Centurion House,London Road,Staines
-upon-Thames,Surrey,London,TW18 4AX
Email: H2YHUK@gmail.com
Tel:+44 07514-677868

