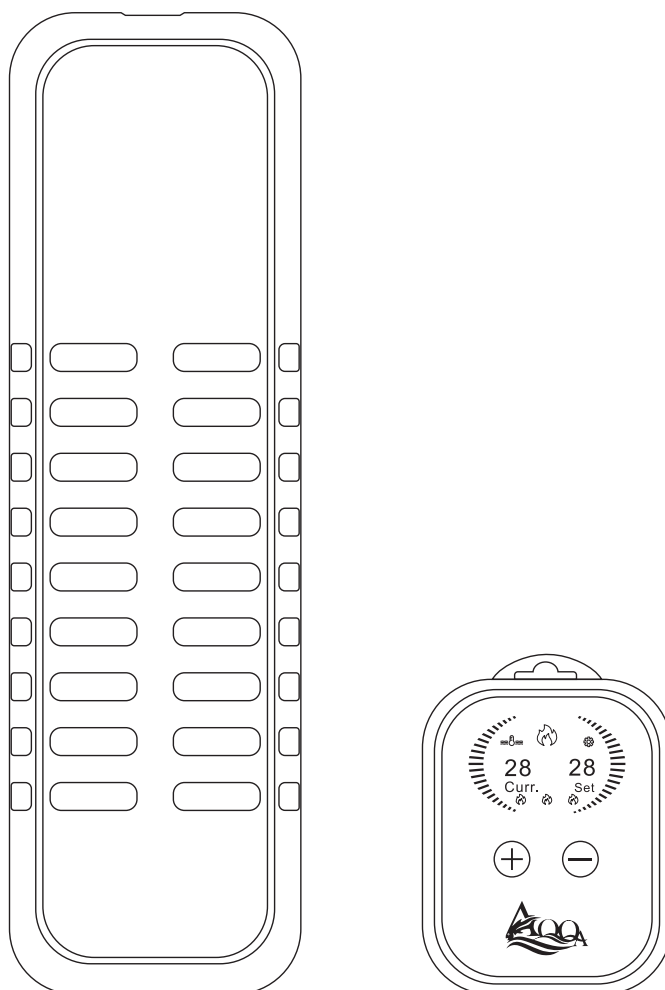


AQ 020 USER MANUAL

AQQA Double Tubes Quartz Aquarium Heater

AQQA's heater is the perfect aquarium heater for your freshwater or saltwater aquariums.



****Reminder: The controller is not waterproof, do not allow it to get wet****

1. PRODUCT FEATURES

Fully submersible: The heater must be fully submerged to work properly.

Rapid thermal accumulation: The heating rod is made of explosion-proof quartz glass material and a high-temperature resistant nickel-chromium heating wire with silicon carbide heat conduction; this results in faster water heating and safer, more durable, longer lasting heating. The double heating rod makes this a more powerful heater.

LCD digital temperature display: LCD digital display screen shows default setting in Fahrenheit for the current water temperature and preset temperature. The external touch controller makes for easy setting and operation. Every touch changes the set temperature by 1°F. The beautiful marquee indicator shows the heating status.

Precise temperature control: Indicator light turns red and starts heating when the current water temperature is 1°F lower than the set temperature. It turns to a steady blue when the water reaches the set temperature. The heater rod temperatures ranges from 68°F to a max of 93°F in order to prevent harm to livestock.

Easy operation: Connect to the socket to use directly. The clear LCD display is easy to read and set!

Auto power off and warning signal: When the heating rod is exposed to air, the heater will shut off automatically and emit a warning signal. When the heating rod is completely immersed in water, it will start working again.

Accurate, Reliable, and Durable: This products double quartz tubes are made of premium materials and with precise scientific design. Our heater will provide years of reliable use.

Memory function: If power is shut off, the heater will keep the temperature settings until it powers on again.

High-temperature resistant safety cover: High quality and high temperature PC resistant plastic cover prevents fish from being harmed.

2 PRODUCT PARAMETERS

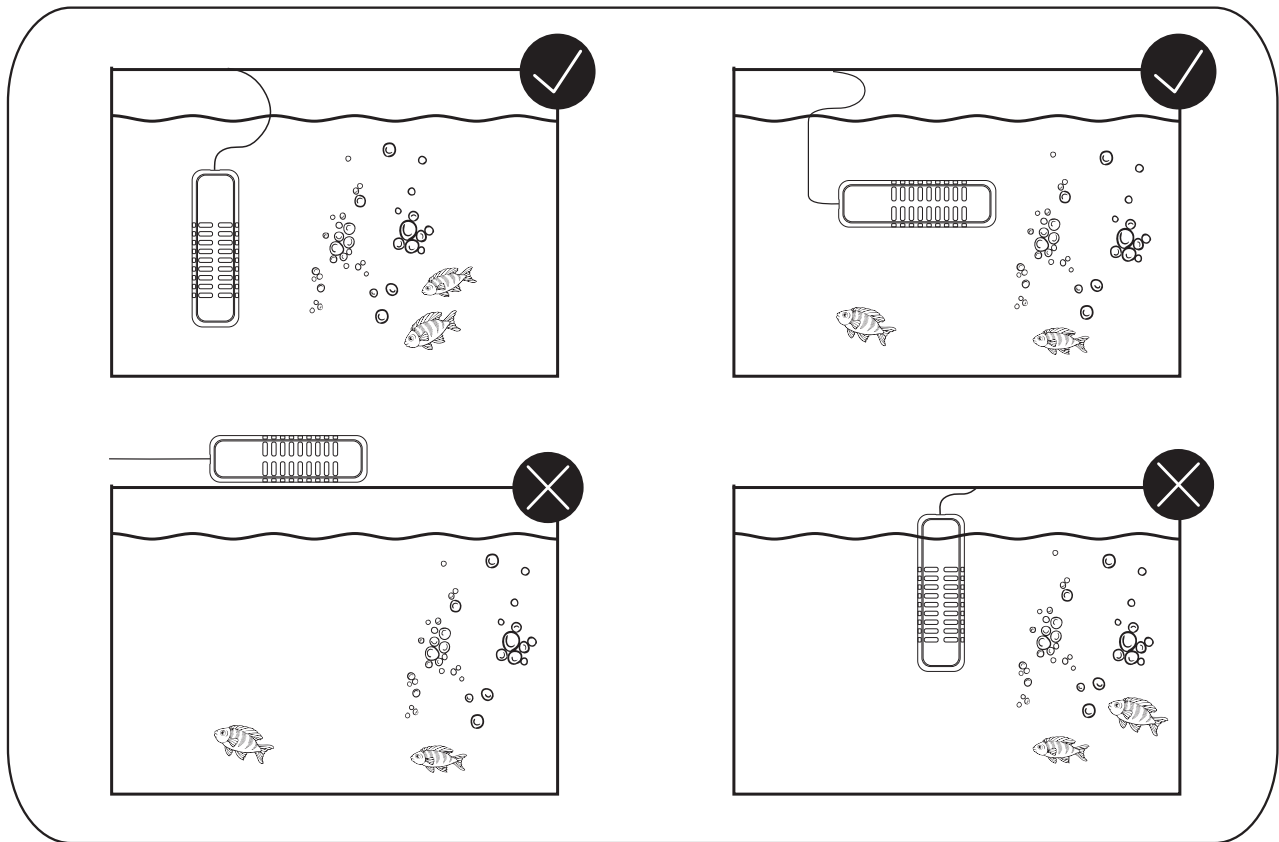
Model No:	AQ 020			
Volt/Freq	US standard AC 110-120V/60Hz		EU/UK standard AC 220-240V/50Hz	
Power	500W	800W	1000W	1200W
Cord length	6.3ft+4ft/1.9m+1.2m			
Application	66-135Gal 250~500L	80-220Gal 300~800L	105-238Gal 400-900L	132-264Gal 500-1000L
Temp Accuracy	±1°F/±1°C			
Control Range	68°F~93°F/ 20°C~34 °C			
Heating Rod Dimension	11.2x3.4x1.4inch			
Temp Controller Dimension	4.5x3.5x1.2inch			

3. PACKAGE INCLUDES

- 1×Double quartz heater with LCD digital controller
- 1x Adjustable clip
- 1x 2pcs suction cup
- 1× User manual

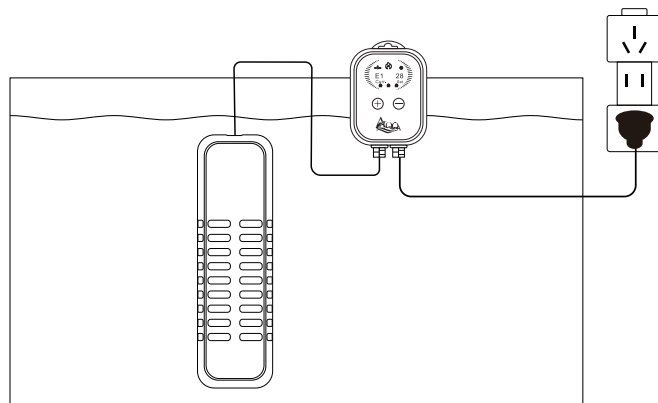
4. APPLICATION

A. Place the heater as shown in the following diagram:



B. Digital display models

1. Out of water: The heating rod is out of water (at least 2.4 inches) and displays the fault code “E1”; the heater will make the warning signal.

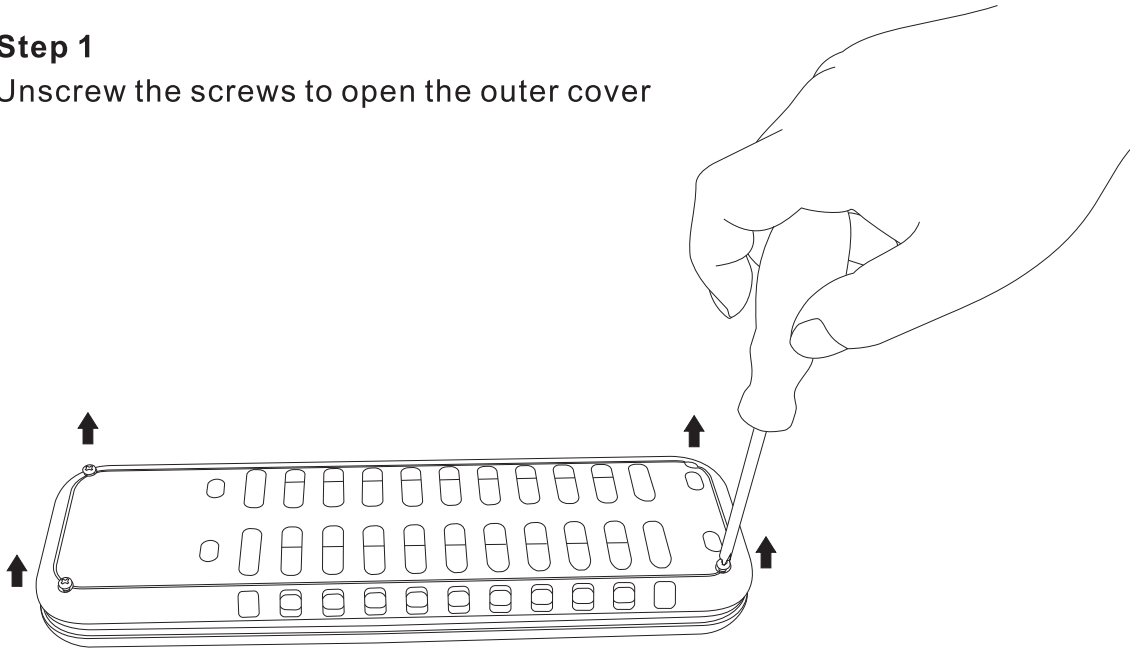


5. Flow diagram for cleaning

Note: Unplug the heater and wait 15 minutes before changing the water or removing the heater from the aquarium.

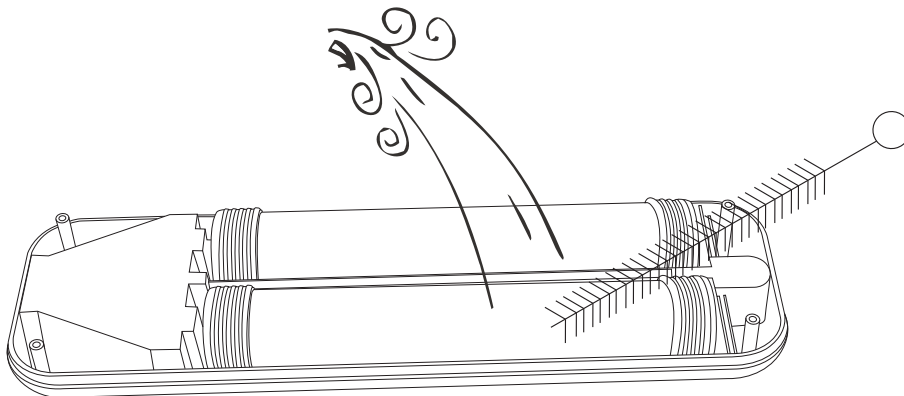
Step 1

Unscrew the screws to open the outer cover



Step 2

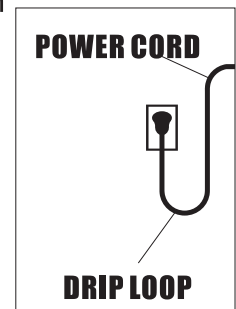
Clean the rod body of the heater and the housing with clean water





6.WARNING: To guard against injury, basic safety precautions should be observed including the following:

1. Read and follow this user manual strictly.
2. **DANGER-** To avoid possible electric shock, special care should be taken since water is employed in the use of aquarium equipment. For each of the following situations, do not attempt to repair yourself; return the heater to an authorized service facility for service or discard the heater.
 - A. If the heater shows any sign of abnormal operation, unplug the power and remove the heater from water after 15 minutes.
 - B. Carefully examine the heater after installation. It should not be plugged in if there is water on parts not intended to be wet.
 - C. Do not operate the heater if it has a damaged cord or plug, if it is malfunctioning, or if it is dropped or damaged in any manner. The power cord of this heater cannot be replaced; if the cord is damaged, the heater should be discarded.
 - D. To avoid the possibility of the heater plug getting wet, position aquarium stand and tank to one side of a wall mounted receptacle/power outlet to prevent water from dripping onto the receptacle or plug. A “drip loop”, shown in the figure below, should be arranged by the user for each cord connecting the heater to the outlet. The “drip loop” is the part of the cord below the level of the outlet, or the connector. If an extension cord is used, to prevent water traveling along the cord and coming in contact with the outlet. If the plug or outlet does get wet, **DO NOT** unplug the cord. Disconnect the fuse to the circuit breaker that supplies power to the heater. Then unplug and examine for the presence of water in the outlet.
3. Close supervision is necessary when the heater is used near children. Daily supervision is necessary when the heater is being used.
4. This heater should not be used by persons (including children) with reduced physical, sensory or mental capabilities, or lack of experience and knowledge, unless they have been given supervision or instruction concerning use of the heater by a person responsible for their safety.
5. To avoid injury, do not touch moving parts or hot parts.
6. Always unplug the heater from the outlet when not in use, before putting on or taking off parts, before maintenance, or placing hands in the water. Never yank the cord to pull plug from outlet. Grasp the plug and pull gently to disconnect.
7. Do not use the heater for other than intended use. The use of attachments not recommended or sold by the appliance manufacturer may cause an unsafe condition and will void the warranty.



8. Do not install or store the heater where it will be exposed to the weather or to temperatures below freezing.
9. Only use in freshwater or saltwater aquariums; do not use the heater in other liquids.
10. Make sure the heater is securely installed before operating it.
11. Read and observe all the important notices on the heater.
12. If an extension cord is necessary, a cord with a proper rating should be used. A cord rated for less amperes or watts than the heater rating may overheat. Care should be taken to arrange the cord so that it will not be tripped over or pulled.
13. The heater is intended FOR HOUSEHOLD USE ONLY.
14. SAVE THIS USER MANUAL.

7. ATTENTION:

- ✓ Please check all the items to inspect condition when unboxing the package.
- ✓ Please read and follow all the instructions carefully.
- ✓ Please choose a heater rated for your aquarium.
- ✓ Please place the heating rod in water flow and don't bury it in substrate.
- ✓ Please place the heating rod fully submersed in water when it's on duty.
Unplug the heater and wait for 15 minutes before changing water or removing the heater.
- ✓ Please keep in mind that the heater can be turned off automatically when exposed to air, but it is a last resort and should be avoided.
- ✓ After using of the heater, calcium carbonate contained in algae or moss may clump and adhere to the heating rod.
- ✓ If dirt adheres to the heating rod, use a sponge or cloth and water to wipe it.
Do not use alcohol or other chemicals as this may damage the heater and harm fish or livestock.
- ✓ When used for a prolonged period with dirt adhered to the heating element, be aware that it may cause failure due to the inability to control the temperature correctly.

8. AQQA LIMITED MANUFACTURER'S WARRANTY

We offer the end user of this product a manufacturer warranty of 2 years from the date of sale if this product was purchased from an AQQA®-authorised specialist dealer

Retain receipt for any future warranty claim. Conditions apply. Products are guaranteed by AQQA® Aquatic Supplies to the original purchaser against defective material and workmanship under normal use for a period up to 2 years from the date of the original purchase through an Authorized Dealer. Refer to the User Manual included with your product for specific warranty details.

Products have no warranty if:

1. The product has been serviced, modified or tampered with by anyone other than AQQA® Aquatic Supplies.
2. The product has been abused or damaged (including broken or cracked bulbs), and/or.
3. The product has been transported without proper packaging.
4. The product was purchased from an Unauthorized Reseller.

WARRANTY LIABILITY DISCLAIMER

In no event will AQQA® be liable for any consequential or incidental damages, including but not limited to, lost aquatic life, personal injury, property damage, equipment damage, lost profits, lost wages, lost savings, lost income, etc., arising out of the use of any AQQA® products.

1.0. Terms and Conditions of Warranty.

- 1.1. AQQA® warrants to the purchaser, for 2 years from date of original purchase through an Authorized AQQA® Reseller, free to repair or replace parts where fault is found due to defective materials or faulty workmanship and where goods do not operate in accordance with the instructions.
- 1.2. All claims for repair or replacement must be made at place of purchase.
- 1.3. Only the direct purchaser is entitled to warranty claims against us and these are not transferable without our consent.
- 1.4. The original and dated Proof of Purchase (receipt) must be supplied with all goods claims. Please also provide this Guarantee where possible.
- 1.5. Wear parts (e.g.: seals, suction devices, axes, pump wheels, light sources, pH electrodes, filter media, such as filter cartridges, as well as UVC burners), glass damage and the opening of the product, as well as structural changes or the use of non-AQQA® original parts are excluded from the guarantee.
- 1.6. All goods subject to claim under Guarantee should be prepared for transportation in the original packaging or other comparable packaging which offers the same degree of protection and AQQA® must incur no costs from the shipment.
- 1.7. Where claims on inspection reveal goods are in normal working order, AQQA® will request reimbursement of all reasonable costs incurred.
- 1.8. Warranty claims do not exist in the case of only insignificant deviations from the agreed or customary condition or usability, e.g. insignificant deviations in colour, dimensions and/or quality or performance characteristics of the products.
- 1.9. Our warranty obligation extends only to the delivery of newly manufactured products. Unless otherwise agreed, used products are sold as seen, excluding any warranty.

9. DISPOSAL

Do not dispose of this product as unsorted municipal waste. Collection of such waste separately for special treatment is necessary. This product has to be disposed of at an authorized place for the recycling of electrical and electronic appliances rather than being disposed of together with the domestic waste. Collecting and recycling waste is a way of saving natural resources. So, please consult with your local seller to make sure the product is disposed of in an environmentally friendly way.



10. CONTACT INFORMATION:

Company Name: Shenzhen Aiku Pet Technology Co., Ltd
Add: Room 501, No. 20, Lane 1, Lishipai, Dafapu Community
Bantian Street, Longgang District, Shenzhen Guangdong. 518000
Email: service@aqqapet.com
Website: <http://www.aqqapet.com>



Company Name: E-CrossStu GmbH
Address: Mainzer Landstr. 69, Frankfurt am
Main, Hessen, 60329
Email: E-CrossStu@web.de
Tel: +49 69332967674



Company Name: YH Consulting Limited
Address: C/O YH Consulting Limited Office
147, Centurion House, London Road, Staines
-upon-Thames, Surrey, London, TW18 4AX
Email: H2YHUK@gmail.com
Tel: +44 07514-677868

