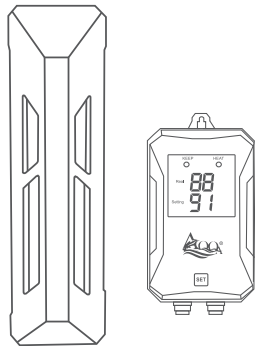




AQ066 USER MANUAL

AQQA Stainless Steel Aquarium Heater



The AQQA stainless steel aquarium heater is a high-quality heating device designed for freshwater aquariums. It offers fast and efficient heating, ensuring the aquarium maintains the optimal temperature. Features a dual display for precise temperature control. It is durable, providing reliable performance for aquarium enthusiasts.

- 1. The controller is not waterproof. Please ensure that it remains dry at all times.
- 2. The heater must be completely submerged in water to ensure proper functionality.

1. PRODUCT FEATURES

Rapid Heating: This heater features a high-performance quartz glass tube and a powerful heating wire for fast and safe water heating. The six quartz heating tubes provide efficient heating.

Reliable and Durable: The stainless steel housing ensures durability and longevity. Dual protection enhances safety and prolongs the lifespan of the heater.

Precise Temperature Control: The indicator light turns red and initiates heating when the current water temperature is lower than the set one 1°F/1 °C. It turns blue when the water reaches the set temperature. The heating rod temperatures range from 59-94°F(15-34°C).

Accurate Dual Digital Display Controller: The high-definition dual digital display on the controller shows the set temperature and real-time water temperature with 1 °F/1 °C accuracy.

Fahrenheit and Celsius Switch: Pressing the controller for 8 seconds allows you to switch between Celsius and Fahrenheit temperature units.

Easy Operation: Simply plug the heater into a socket to start using it. The external touch controller enables convenient temperature adjustment. Each touch changes the set temperature by 1°F/1°C.

Auto Power Off and Error code reminder: The heater automatically shuts off and displays error code L1 if the heating rod is exposed to air. It resumes operation when fully immersed in water. The high and low-temperature protection feature triggers error codes HH for temperatures above 95 °F and LL for temperatures below 59 °F.

Memory Function: The heater retains the temperature settings in case of a power outage and resumes operation once power is restored.

High-Temperature Resistant Safety Cover: The ABS plastic cover is designed to withstand high temperatures, ensuring the safety of fish and other aquatic organisms.

2. PRODUCT PARAMETERS

Model No:	AQ066						
Power	100W	200W	300W	500W	800W	1000W	1200W
Application	8-16Gal (30-60L)	16-32Gal (60-120L)	26-53Gal (100-200L)	53-80Gal (200-300L)	80-135Gal (300-500L)	135-172Gal (500-650L)	150-280Gal (570-1060L)
Voltage	AC110-120V/60Hz AC220-240V/50Hz						
Control Range	59°F~94°F/ 15°C~34 °C						
Temp Accuracy	±1°F / ±1°C						
Heating Rod Dimension	7.3in x 3.2in x 0.8in 18.5cmx8.0cmx2.0cm				8.9in x 3.2in x 0.8in 22.5cmx8.0cmx2.0cm		
Temp Controller Dimension	4.7in x 2.8in x 1.1in/12.0cmx7.0cmx2.7cm						

3.ERROR CODE COMPARISON TABLE

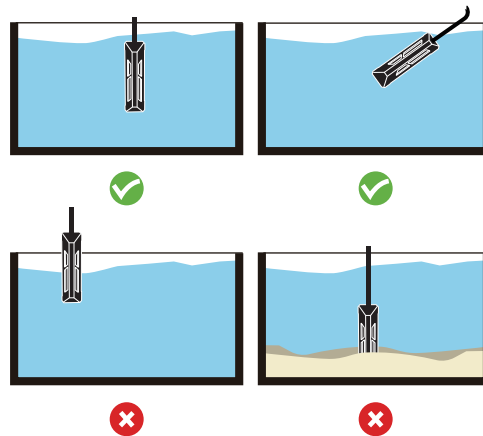
The processing method of the code	Error Code	Explanation	Solutions
	L1	Power off when out of water	Ensure the heating rod is fully immersed in water
appears on the LED screen	HH	Water temperature exceeds 95 °F (35°C)	Wait for the water temperature to decrease below 95 °F (35°C)
	LL	Water temperature below 59 °F (15°C)	Wait for the water temperature to increase above 59 °F (15°C)
	EE	The probe damaged	Unplug it once, Do not use it, and replace

4.PACKAGE INCLUDES

- 1 x Stainless steel heater including controller
- 3 x Suction cups
- 1 x Controller bracket
- 1 x Adhesive hook
- 1 x User manual

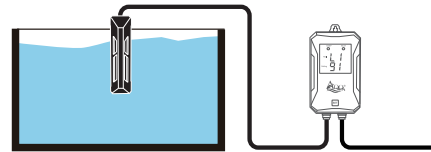
5. APPLICATION

A.Place the heater as shown in the following diagram:



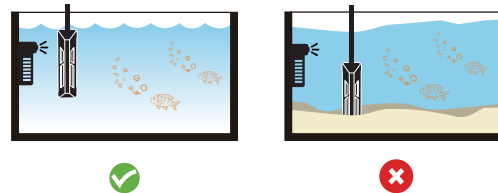
B.Digital display models

- 1. **Out of water alert:** when the heating rod is out of the water (at least 2.4 inches), the digital display will show the error code "L1" and does not send a warning signal.



! Important Reminder

- 1 Place the AQQA heater fully submersible when it's on, unplug it, and wait for 15 minutes before changing the water or removing it.
- 2 Please make sure there is enough water flow and water circulation in your fish tank when using the heater.
- 3 Please do not bury the heating rod or use it near the sand.



6.WARNING

To guard against injury, basic safety precautions should be observed including the following:

- 1.Read and follow this user manual strictly.
- 2.DANGER-To avoid possible electric shock, special care should be taken since water is employed in the use of aquarium equipment. For each of the following situations, do not attempt to repair yourself; return the heater to an authorized service facility for service or discard the heater.
- A.If the heater shows any sign of abnormal operation, unplug the power and remove the heater from water after 15 minutes.
- B.Carefully examine the heater after installation. It should not be plugged in if there is water on parts not intended to be wet.
- C.Do not operate the heater if it has a damaged cord or plug, if it is malfunctioning, or if it is dropped or damaged in any manner. The power cord of this heater cannot be replaced; if the cord is damaged, the heater should be discarded.
- D.To avoid the possibility of the heater plug getting wet, position aquarium stand and tank to one side of a wall mounted outlet to prevent water from dripping onto the outlet or plug. A "drip loop" , shown in the figure below, should be arranged by the user for each cord connecting the heater to the outlet. The "drip loop" is the part of the cord below the level of the outlet, or the connector. If an extension cord is used, to prevent water traveling along the cord and coming in contact with the outlet. If the plug or outlet does get wet, DO NOT unplug the cord. Disconnect the fuse to the circuit breaker that supplies power to the heater. Then unplug and examine for the presence of water in the outlet.

POWER CORD



DRIP LOOP

- 3.Close supervision is necessary when the heater is used near children. Daily supervision is necessary when the heater is being used.
- 4.This heater should not be used by persons (including children) with reduced physical, sensory or mental capabilities, or lack of experience and knowledge, unless they have been given supervision or instruction concerning use of the heater by a person responsible for their safety.
- 5.To avoid injury, do not touch moving parts or hot parts.
- 6.Always unplug the heater from the outlet when not in use, before putting on or taking off parts, before maintenance, or placing hands in the water. Never yank the cord to pull plug from outlet. Grasp the plug and pull gently to disconnect.
- 7.Do not use the heater for other than intended use. The use of attachments not recommended or sold by the appliance manufacturer may cause an unsafe condition and will void the warranty.
- 8.Do not install or store the heater where it will be exposed to the weather or to temperatures below freezing.
- 9.Only use in freshwater or saltwater aquariums; do not use the heater in other liquids.
- 10.Make sure the heater is securely installed before operating it.
- 11.Read and observe all the important notices on the heater.
- 12.If an extension cord is necessary, a cord with a proper rating should be used. A cord rated for less amperes or watts than the heater rating may overheat. Care should be taken to arrange the cord so that it will not be tripped over or pulled.
- 13.The heater is intended FOR HOUSEHOLD USE ONLY.
- 14. SAVE THIS USER MANUAL.

7. ATTENTION

- ✓Please check all the items to inspect condition when unboxing the package.
- ✓Please read and follow all the instructions carefully.
- ✓Please choose a heater rated for your aquarium.
- ✓Please place the heating rod in water flow and don't bury it in substrate.

- ✓Please place the heating rod fully submersed in water when it's on duty. Unplug the heater and wait for 15 minutes before changing water or removing the heater.
- ✓Please keep in mind that the heater can be turned off automatically when exposed to air, but it is a last resort and should be avoided.
- ✓After using of the heater, calcium carbonate contained in algae or moss may clump and adhere to the heating rod.
- ✓If dirt adheres to the heating rod, use a sponge or cloth and water to wipe it. Do not use alcohol or other chemicals as this may damage the heater and harm fish or livestock.
- ✓When used for a prolonged period with dirt adhered to the heating element, be aware that it may cause failure due to the inability to control the temperature correctly.

8. DISPOSAL

Do not dispose this product as unsorted municipal waste. This product must not be disposed together with the domestic waste it must be disposed of at an authorized place for recycling of electrical and electronic appliances. By collecting and recycling waste, you help save natural resources, and make sure the product is disposed in an environmental friendly way.



9. WARRANTY

This product MUST be purchased from an authorized AQQA reseller. Visit our website for a list of authorized resellers. AQQA warrants this product against defects in materials and workmanship for ONE(1) YEAR from the date of the original retail purchase and is non-transferable. Warranty on all products, including aquariums. But it is limited to the replacement of the products and does not cover fish loss, personal injury, property loss or direct, incidental or consequential damage caused by using this product. **Note:** AQQA One-year Limited Warranty does not cover damage caused by the followings: improper installation, saltwater corrosion, electrical surges or modifications. If you discover a defect, please contact AQQA , who will, at its option, repair or replace the product at no charge, provided that you return it during the warranty period. A copy of the bill of sale is required as proof of the original purchase date in the event of the product needing repairs within the warranty period. AQQA does not warrant any products that are not AQQA 's. This warranty does not apply if the product has been damaged by accident, abuse, misuse or misapplication, or modified without the written permission of AQQA.

10. CONTACT INFORMATION:

Company Name: Shenzhen Aiku Pet Technology Co., Ltd
Add: Room 501, No.20, Lane 1, Lishipai, Dafapu Community
Bantian Street, Longgang District, Shenzhen Guangdong. 518000
Email: service@aqqapet.com
Website: http://www.aqqapet.com



Company Name:Acumen IBC Ltd
Address:Ground Floor,94 Ock Street,
Abingdon, OX14 5DH"
E-mail:info@ukacumen.com
Tel:+44 7706338663



Company Name:EUREP GmbH
Address:Unterlettenweg 1a 85051
Ingolstadt Germany
E-mail:eurep@eurep-gmbh.com
Tel:+49 841 8869 7744



成品尺寸80x110mm 128G铜版纸 风琴折 正反面印刷